



THE BIG DIGITAL

ELEMENTARY

Note Spelling BOOK

75 Pages

From Bass G to G Above Treble Staff

carolmatzpiano.com

THE BIG DIGITAL

ELEMENTARY

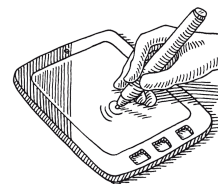
Note Spelling BOOK

LICENSE TERMS

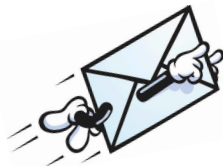
This PDF is licensed for use by **one piano studio only**. Teachers may print unlimited copies, but only for use with their own students. This PDF may not be resold or distributed, except as described above.

For inquiries, contact us at: info@carolmatzpiano.com

In addition to printing, this PDF may be loaded to a tablet (such as an iPad®) for use with apps that allow you to write on the music with a stylus or finger. For more information on this, refer to "**Using PDFs on Tablets**" in the FAQ section at carolmatzpiano.com



[Click here](#) for tips on sharing the materials with your students!



BDB26

© Copyright 2026 by Carol Matz

All Rights Reserved Studio-Licensed for Purchaser

CONTENTS

PART 1

THE BASICS

Staff Spaces & Lines.....	6
Drawing Middle C.....	8
Treble G and Bass F.....	10
Stem Direction.....	11

NOTES IN “MIDDLE C POSITION”

Treble Clef D, E, F.....	12
Treble Clef C, D, E, F, G.....	13
Bass Clef B and A.....	16
Bass Clef G and F.....	18
Bass Clef Review.....	20

DRAWING NOTES, RESTS, CLEFS

Drawing Notes and Stems.....	22
Drawing Rests.....	23
Drawing Clefs.....	24

NOTES IN LH “BASS C POSITION”

Bass C and D.....	26
Bass C, D, and E.....	27
Bass F and G Review.....	28
Bass C, D, E, F, G.....	29
Treble & Bass Clef Note Review.....	30

MORE TREBLE CLEF NOTES

Treble A and B.....	32
Treble C.....	34
Treble E.....	35
Treble C, D, E.....	36
Treble C, D, E, F, G.....	37
Treble Clef Note Review.....	38

MORE BASS CLEF NOTES

Bass Clef Low G.....	40
Bass Clef D Above Middle C.....	41
Bass Clef Low G, A, B, C, D.....	42
Bass Clef Note Review.....	44
Grand Staff Note Review.....	46

SHARPS, FLATS, & NATURALS

Sharps, Flats, & Naturals.....	50
Drawing Sharps, Flats, & Naturals.....	51
Sharp, Flat, & Natural Notes.....	52

REVIEW & SUMMARY

Part 1 Review.....	54
Part 1 Summary.....	57

CONTENTS (cont.)

PART 2

NOTE SPELLING WITH KEY SIGNATURES

Key of G Major.....60

Key of F Major.....61

Key of D Major.....62

Key of A Major.....63

ACCIDENTALS & ENHARMONICS

Accidentals.....64

Enharmonics on the Keyboard.....66

Enharmonics on the Staff.....67

White-Key Enharmonic Notes.....68

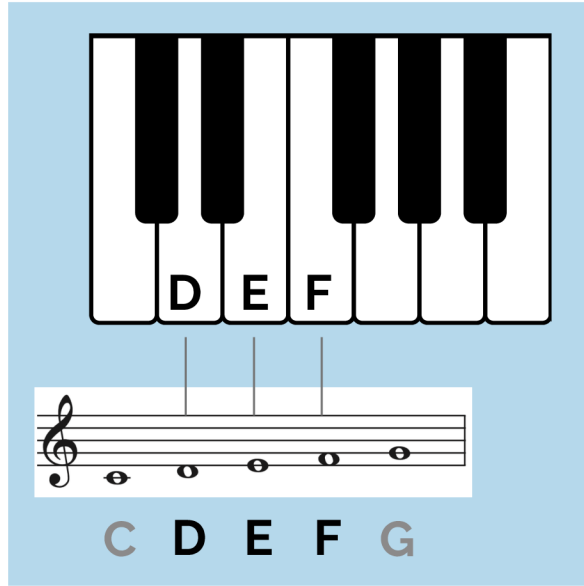
Enharmonic Notes Review.....69

REVIEW & SUMMARY

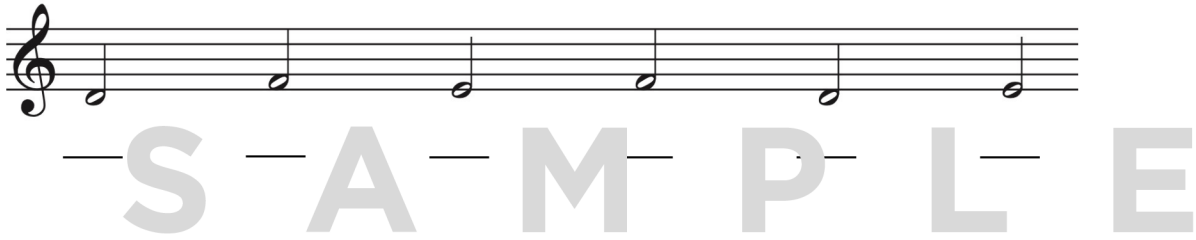
Part 2 Review.....71

Part 2 Summary.....74

Treble Clef D, E, F



Write the letter name under each note.



Draw an "X" through each wrongly labeled note.

Ex:



D



F



D



E



E



D

Treble Clef Middle C, D, E, F, G, cont.

Write the letter name under each note to spell words.

B _ _ _ A _ _ _ L _

_ L _ _ _ M _ _ _ W

L _ _ _ A _ _ _ A _ _ _

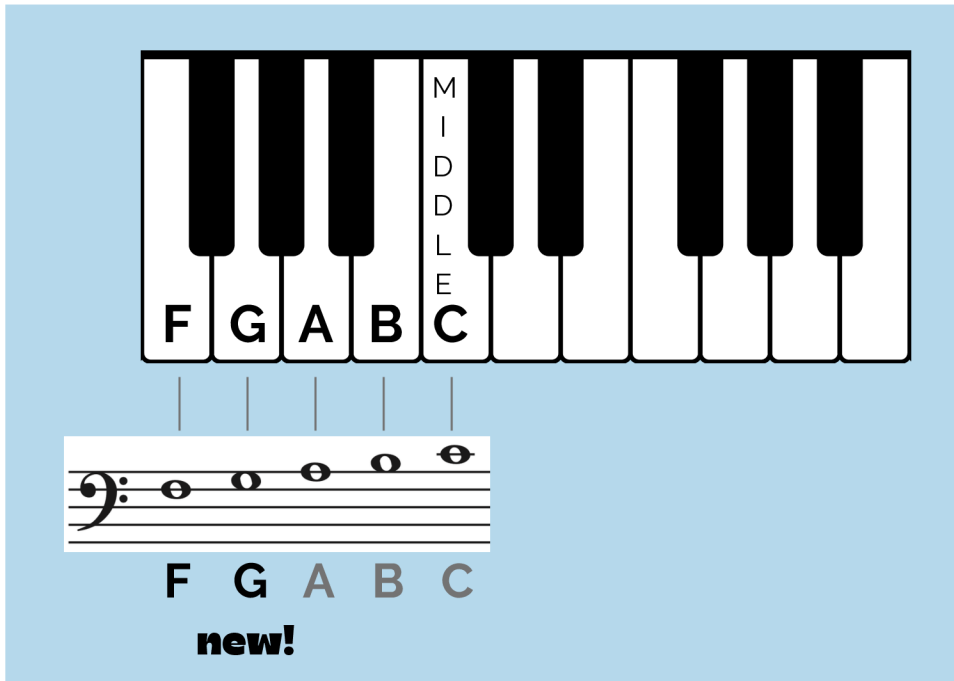
S A M P L E
_ _ _ _ _ O _ _ _ I _

Write a note above each letter to spell the words below.
Be sure to draw the stems going **UP** on the **RIGHT**!

Ex:

E G G F E D F E E

Bass Clef G and F



Write the letter name under each note.



S A M P L E

Draw an "X" through each wrongly labeled note.

Ex:



B



G



F



C



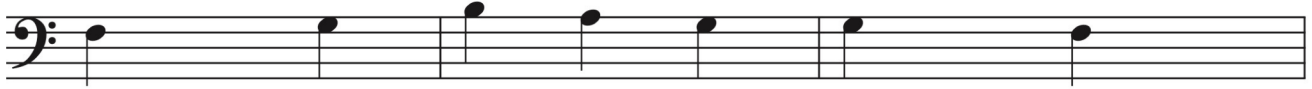
A



F

Bass Clef Review—F, G, A, B, C

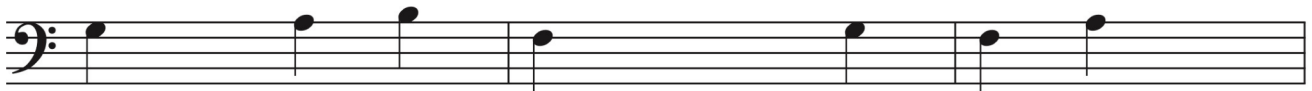
Write the letter name under each note to spell words.



— | — — — — | — T



— — — — — E — O L —



— R — — — R O — — — R

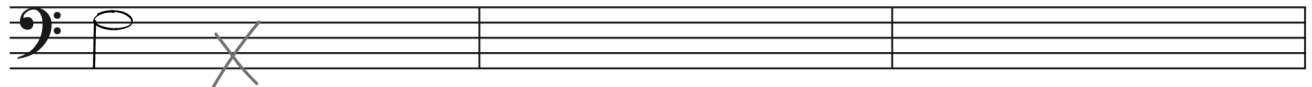
S A M P L E



— — S — O — — — Y — — — T

Write a note above each letter to spell the words below.
Be sure to draw the stems going **DOWN** on the **LEFT**!

Ex:



F O G C A B B A G

Drawing Notes and Stems

Stems go **UP** for notes **below the middle line**. All others go **DOWN**.

middle line →

UP DOWN DOWN

(The note **ON** the middle line is stem **DOWN**.)

Draw stems on these note heads:

S A M P L E

Draw **whole notes** for each letter name.

Then, add stems (to create half notes).

Ex:

E C G D F E

Ex:

B G F C A B

Bass C, D, and E

B
A
S
S

C D E

M
I
D
D
L
E

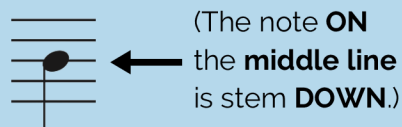
C

bass
C D E
new!

middle
C

Remember: stems go **UP** for notes
below the middle line.

All others go **DOWN.**



Bass D
stem down

Write the letter name under each note.

S — A — M — P — L — E

Write the letter name under each note to spell words.

— U — — I — — — — —

— O — — U — — U — — —

Treble & Bass Clef Note Review

Each grand staff below has **both treble clef and bass clef notes**.

Write the letter names under the notes to spell words.

— U — — I — — — — N

— I — P — — — — I — —

— R O — — — — — U —

— — T — — — N — — — — Y

Treble C, D, E, F, G

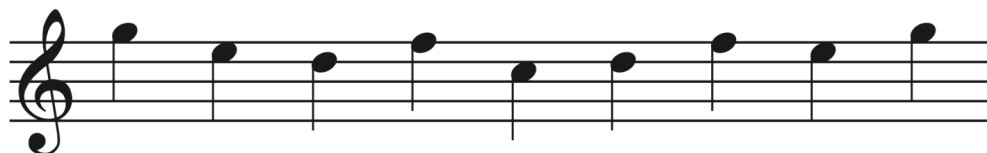
MIDDLE C

TREBLE C D E F G

C D E F G

new!

Write the letter name under each note.



S A M P L E

Write the letter name under each note to spell words.



___ L ___ ___ U ___ ___ I ___



___ R ___ ___ H ___ ___

Bass Clef Low G, A, B, C, D

LOW G A B C D G A B C D

BASS MIDDLE

low G A B C D G A B C D

new!

Write the letter name under each note.

S - A - M - P - L - E

Write the letter name under each note to spell words.

— — — R L — — — I —

— — N — — — Y — — —

Grand Staff Note Review

Each grand staff below has **both treble clef and bass clef notes**.

Write the letter names under the notes to spell words.

A grand staff with two staves. The treble staff contains notes for the letters P, U, and T. The bass staff contains notes for P, U, and T. Below the staves are dashed lines for writing the letter names.

P _ _ _ _ U _ _ T _

A grand staff with two staves. The treble staff contains notes for the letters S, A, M, P, L, E. The bass staff contains notes for S, A, M, P, L, E. Below the staves are dashed lines for writing the letter names.

R _ _ _ _ R _ _ O _

S A M P L E

A grand staff with two staves. The treble staff contains notes for the letters R, I, G, H, T. The bass staff contains notes for R, I, G, H, T. Below the staves are dashed lines for writing the letter names.

_ _ R _ _ _ _ _ T

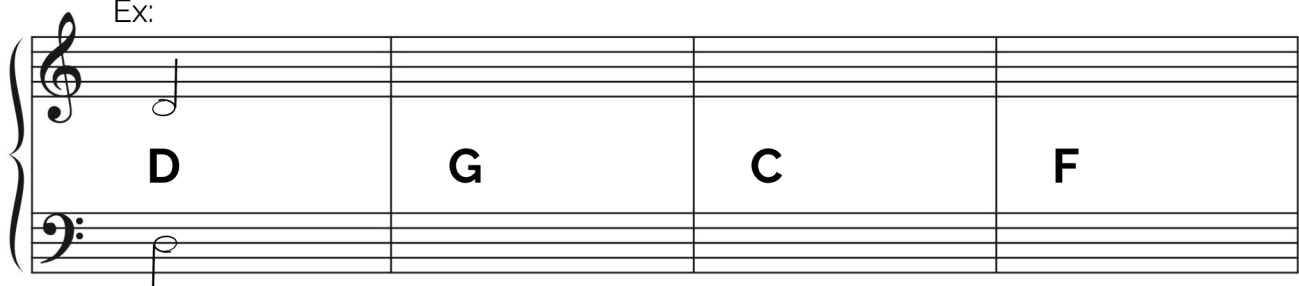
A grand staff with two staves. The treble staff contains notes for the letters K, N, A, C, K. The bass staff contains notes for K, N, A, C, K. Below the staves are dashed lines for writing the letter names.

_ _ _ N _ _ _ _ _ K _ _

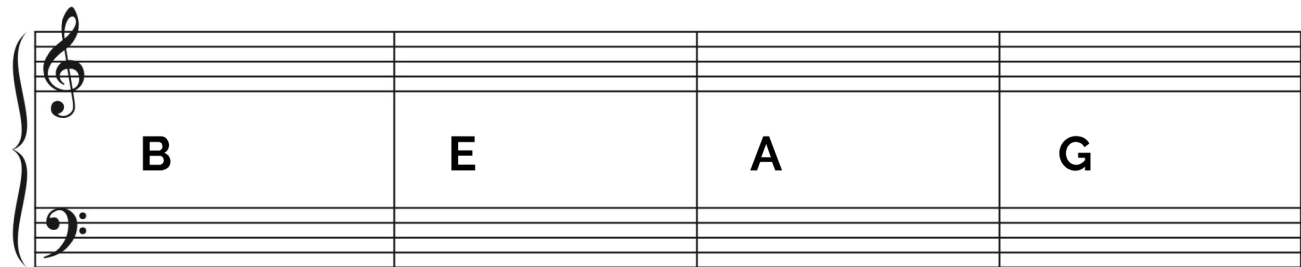
Grand Staff Note Review, cont.

Write a note on each staff for the letter names below.

Ex:



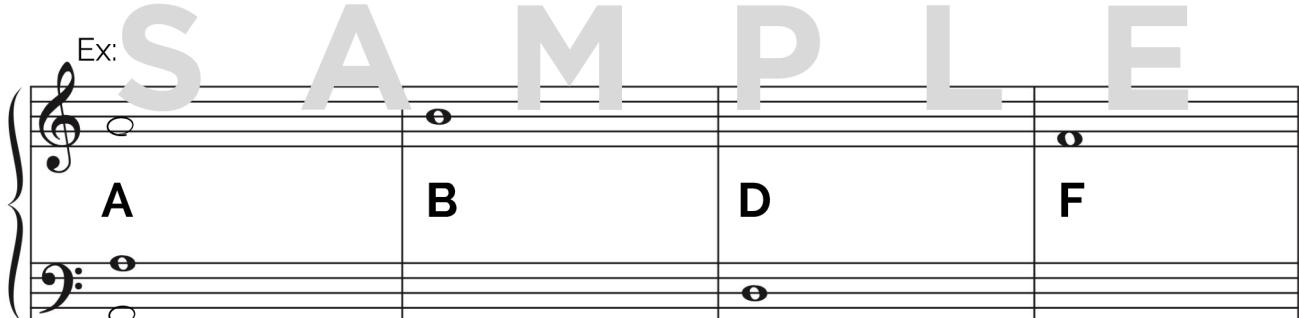
A grand staff with four measures. The first measure shows a treble clef with a quarter note on D and a bass clef with a quarter note on D. The second measure has a letter 'G' in the treble staff. The third measure has a letter 'C' in the treble staff. The fourth measure has a letter 'F' in the treble staff.



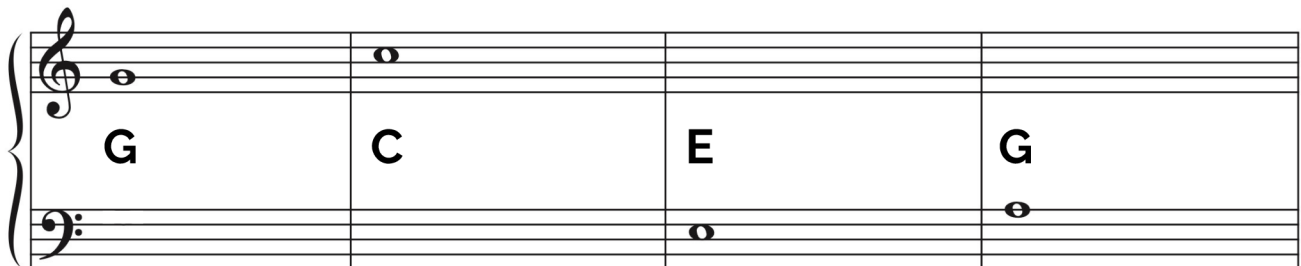
A grand staff with four measures. The first measure has a letter 'B' in the treble staff. The second measure has a letter 'E' in the treble staff. The third measure has a letter 'A' in the treble staff. The fourth measure has a letter 'G' in the treble staff.

For each example below, **write 2 more notes** on the grand staff.

Ex: **S A M P L E**



A grand staff with four measures. The first measure shows a treble clef with a whole note on A and a bass clef with a whole note on A. The second measure has a letter 'B' in the treble staff. The third measure has a letter 'D' in the treble staff. The fourth measure has a letter 'F' in the treble staff.



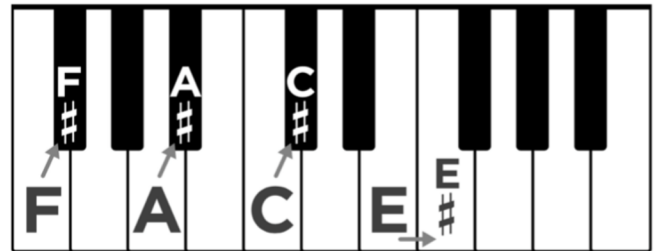
A grand staff with four measures. The first measure has a letter 'G' in the treble staff. The second measure has a letter 'C' in the treble staff. The third measure has a letter 'E' in the treble staff. The fourth measure has a letter 'G' in the treble staff.

Sharps, Flats, & Naturals

SHARPS



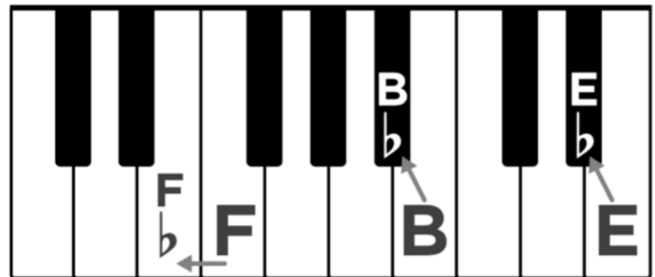
This is a **sharp**.
It means to play the closest
key **up / to the right**.



FLATS



This is a **flat**.
It means to play the closest
key **down / to the left**.



S A M P L E

NATURALS



This is a **natural**.
A natural is **ALWAYS** a white key!
It **cancels a sharp or a flat**.

Play the following notes on the piano keyboard:

F#

B_b

C#

E_b

G_♯

A_b

Key of F Major

The **Key of F Major** has a **Bb** in the key signature. All the B's—no matter where they are on the staff—should be played as Bb's.



The examples below are written in the **key of F major**—with a **Bb in the key signature**. Write the letter name under each note to spell words. Be sure to label all the B's as Bb's. Notice the clef signs.



Ex: Bb ___ ___ ___ **N** ___ **I** ___ ___ ___ **T**

S A M P L E



W ___ ___ ___ **R** ___ ___ ___ **U** ___ ___ ___



___ ___ ___ ___ **L** ___ ___ ___ **U** ___ ___ ___

Accidentals

Accidentals are sharps, flats, or naturals that are NOT part of the key signature. They are written in front of notes in the music.

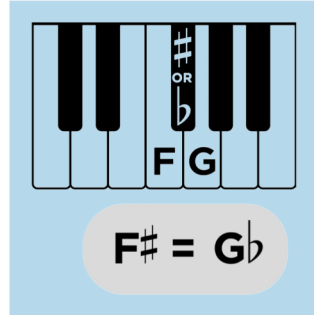
An accidental affects all the notes on the same line or space **in that measure**. But at the next measure, the accidental is "erased."

S A M P L E

Write the letter name for each note. Watch for accidentals and notice the clef signs.

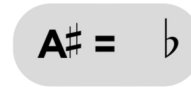
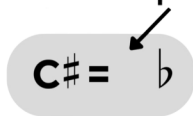
Enharmonics on the Keyboard

All the **black keys** on the keyboard can be spelled (or named) **TWO different ways**. One way is with a sharp, and the other way is with a flat. For example:

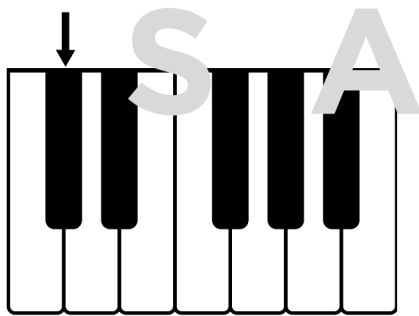


F# and **Gb** are the same key on the keyboard, with two different names—a **sharp name** and a **flat name**. These are called **enharmonics** (or enharmonic spellings).

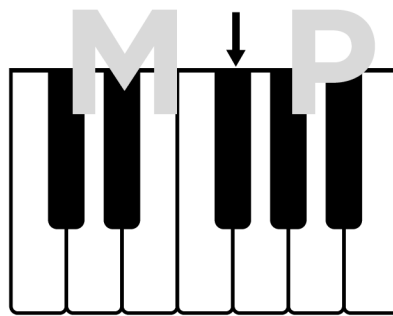
For each example below, write-in the correct letter name.



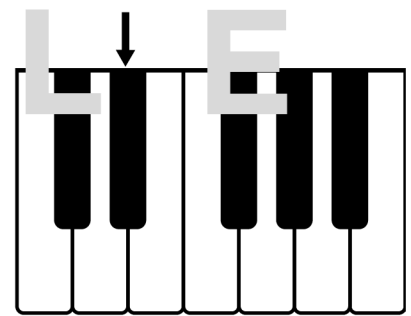
For each note below with an arrow, write two different letter names.



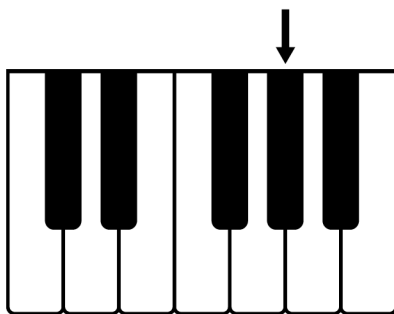
Ex: C# or D^b



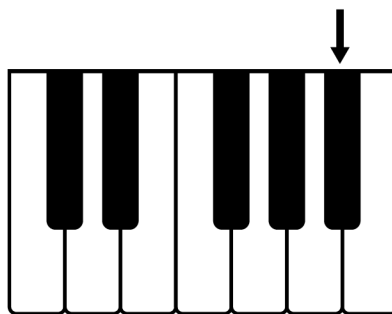
___ or ___



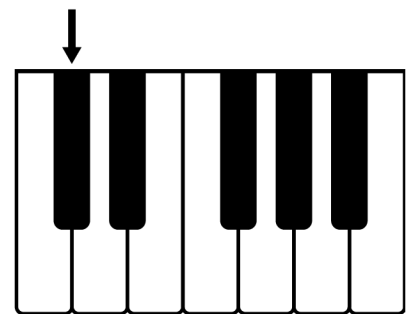
___ or ___



___ or ___



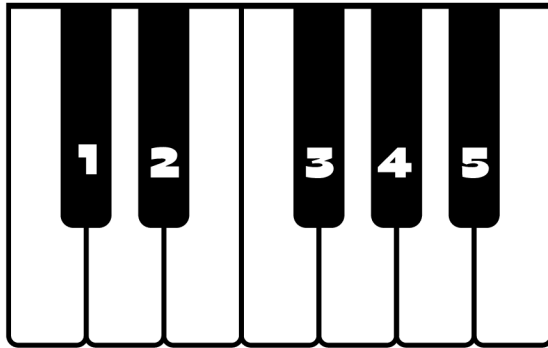
___ or ___



___ or ___

Part 2 Review, page 3

7. For each numbered black key, write two different letter names (enharmonics).



- Ex: 1. C# or Db
 2. ___ or ___
 3. ___ or ___
 4. ___ or ___
 5. ___ or ___

8. Draw an enharmonic note for each note below.
 Then, write the letter names for both notes.
 (Notice the clef signs.)

Ex: Db C# ___ ___ ___ ___

9. Write an enharmonic letter name for each note. (The letter names will spell words.)

Ex: G^b **L** ___ ___ ___ ___ **H** ___ ___