



THE BIG
DIGITAL
Christmas
Activity Sheets
BOOK

30 Activity Sheets!

**EARLY ELEMENTARY TO
LATE ELEMENTARY**

carolmatzpiano.com



THE BIG DIGITAL *Activity Sheets* BOOK

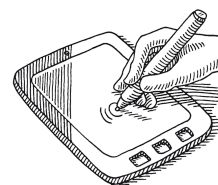
BY CAROL MATZ

STUDIO-LICENSE TERMS

This PDF is licensed for use by ONE PIANO STUDIO ONLY. Teachers may print unlimited copies, but only for use with their own students. This PDF may not be resold or distributed, except as described above.

For inquiries, contact us at: info@carolmatzpiano.com

In addition to printing, this PDF may be loaded to a tablet (such as an iPad®) for use with apps that allow you to write on the music with a stylus or finger. For more information on this, refer to "**Using PDFs on Tablets**" in the FAQ section at carolmatzpiano.com



[Click here](#) for tips on sharing the materials with your students!



BDB20

© Copyright 2025 by Carol Matz

All Rights Reserved Studio-Licensed for Purchaser

CONTENTS

EARLY ELEMENTARY

Notes (Whole/Half/Quarter).....	5
Notes: Bass F, Mid C, Treb G.....	7
Rests (Whole/Half/Quarter).....	9
Notes: RH Mid C, D, E, F, G.....	11
Dotted Half Note.....	13
Note & Rest Values Review.....	15
Time Signatures (4/4 and 3/4).....	17
Notes: LH Bass F, G, A, B, Mid. C.....	19
Dynamics (p, mp, mf, f).....	21
Note Review Middle C Position.....	23
Parts of the Staff.....	25
Note & Rest Review.....	27
Note & Terms Review.....	29
Terms and Symbols.....	31
Skip, Step, or Repeat.....	33
Notes: LH Bass C, D, E, F, G.....	35
Staccato vs. Legato.....	37
Notes: LH Bass C to Middle C.....	39
Octaves.....	41
Ties vs. Slurs.....	43

ELEMENTARY

Notes: Bass C to Treble G.....	45
Whole Steps vs. Half Steps.....	47
Sharps.....	49
Sharp & Half Step Review.....	51
Flats and Naturals.....	53
Sharps, Flats, Naturals, Enharmonics....	55
Notes: RH Treble C, D, E, F, G.....	57
8th Notes.....	59
Terms and Symbols.....	61
Note Review.....	63
2nds and 3rds.....	65
4ths and 5ths.....	67
Notes: LH Bass G, A, B, C, D.....	69
Notes: RH Treble G, A, B, C, D.....	71
I, IV, V7 Chords in C and G.....	73

LATE ELEMENTARY

8th Rests and Dotted Quarter Notes.....	75
I, IV, V7 Chords in C, G, and F.....	77
Terms and Symbols.....	79
Ledger-Line Notes.....	81
6ths and 7ths / Interval Review.....	83

EARLY ELEMENTARY

Notes: RH Mid C, D, E, F, G

Color each ornament as follows:

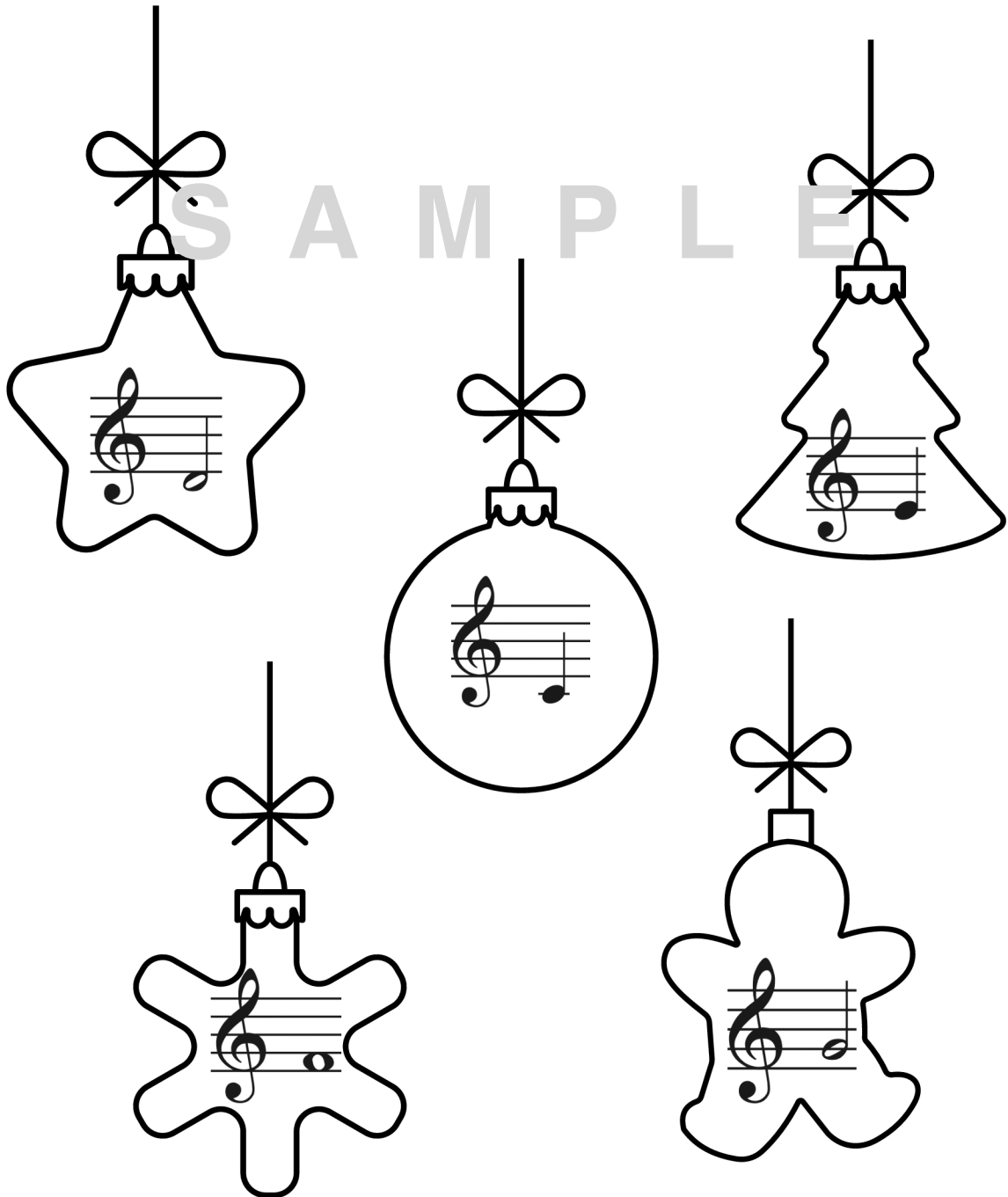
C = BLUE

D = RED

E = GREEN

F = ORANGE

G = YELLOW



EARLY ELEMENTARY**Notes: RH Mid C, D, E, F, G**

Complete the rhyme by writing the letter names in the blanks.



Th__ tr__e is r__a__y,

S A M P L E



bri__ht li__hts __low.



__i__ts ar__ wrapp__ __



an__ pla__e __ b__low!



EARLY ELEMENTARY

Note & Terms Review

Fill in the blanks, then find your answers in the puzzle.
Circle words going **across**, **up and down**, and **diagonally**.
Answers are at the bottom of the page, upside-down.



S A M P L E

This () is a quarter _____.

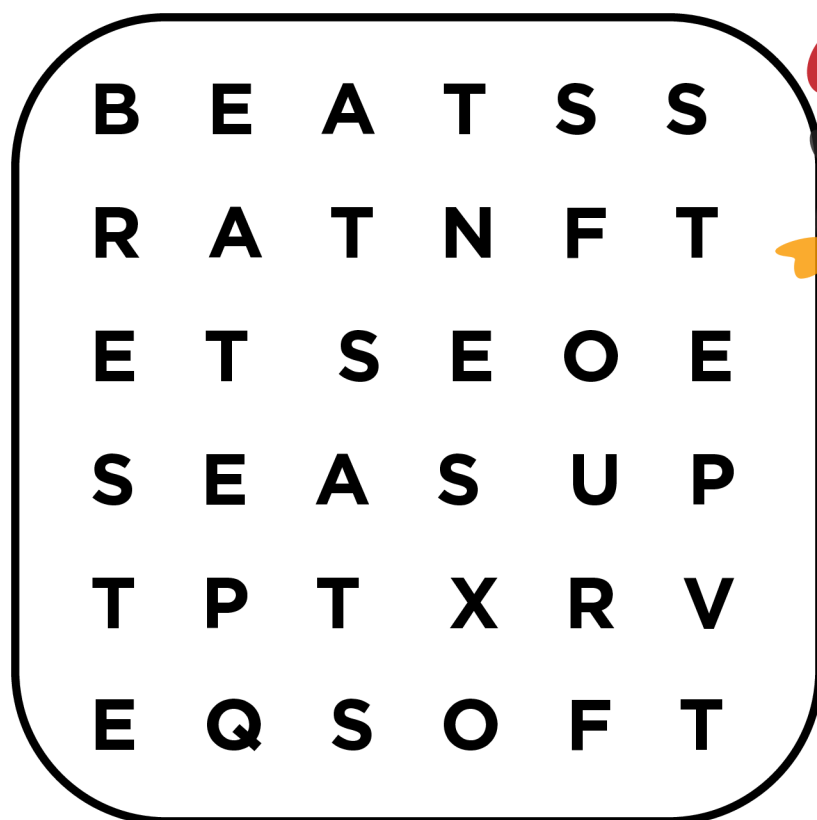
 This is a _____ clef.

$3/4$ means three _____ in a measure.

 This note gets _____ beats.

mp means play medium _____.

From F to G is a whole _____.

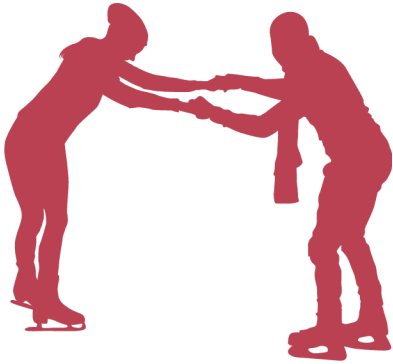


Answers: REST, BEATS, SOFT, FOUR, STEP.

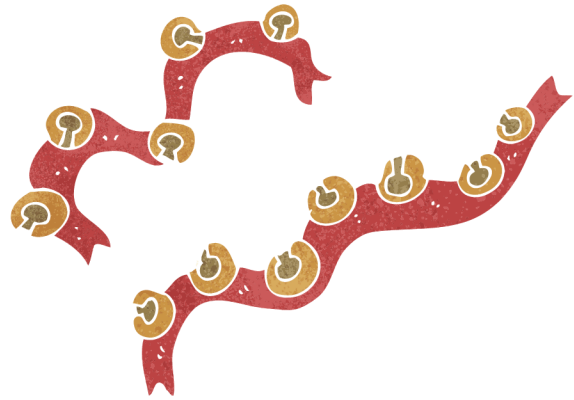
EARLY ELEMENTARY**Staccato vs. Legato**

Circle *staccato* or *legato* for each example below.

(Answers are at the bottom of the page, upside-down.)

1. Gliding on ice skates

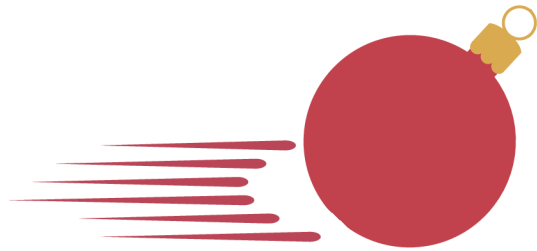
staccato *legato*

2. Sleigh bells jingling

staccato *legato*

3. Logs crackling in the fireplace

staccato *legato*

4. An ornament rolling across the floor

staccato *legato*

Answers: 1. legato, 2. staccato, 3. staccato, 4. legato

EARLY ELEMENTARY

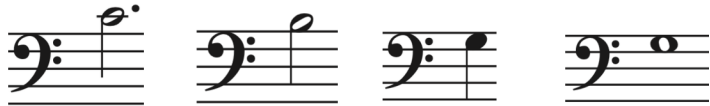
Notes: LH Bass F, G, A, B, Mid. C

Complete the rhyme by writing the letter names in the blanks.



S__nt__'s slei__h is

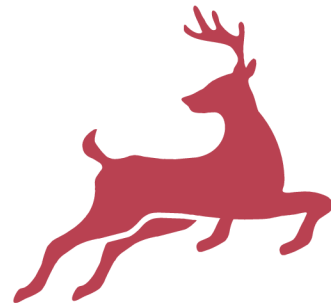
S A M P L E



__lim__in__ hi__h,



so__rin__ __ __st



__s reindeer __ly!

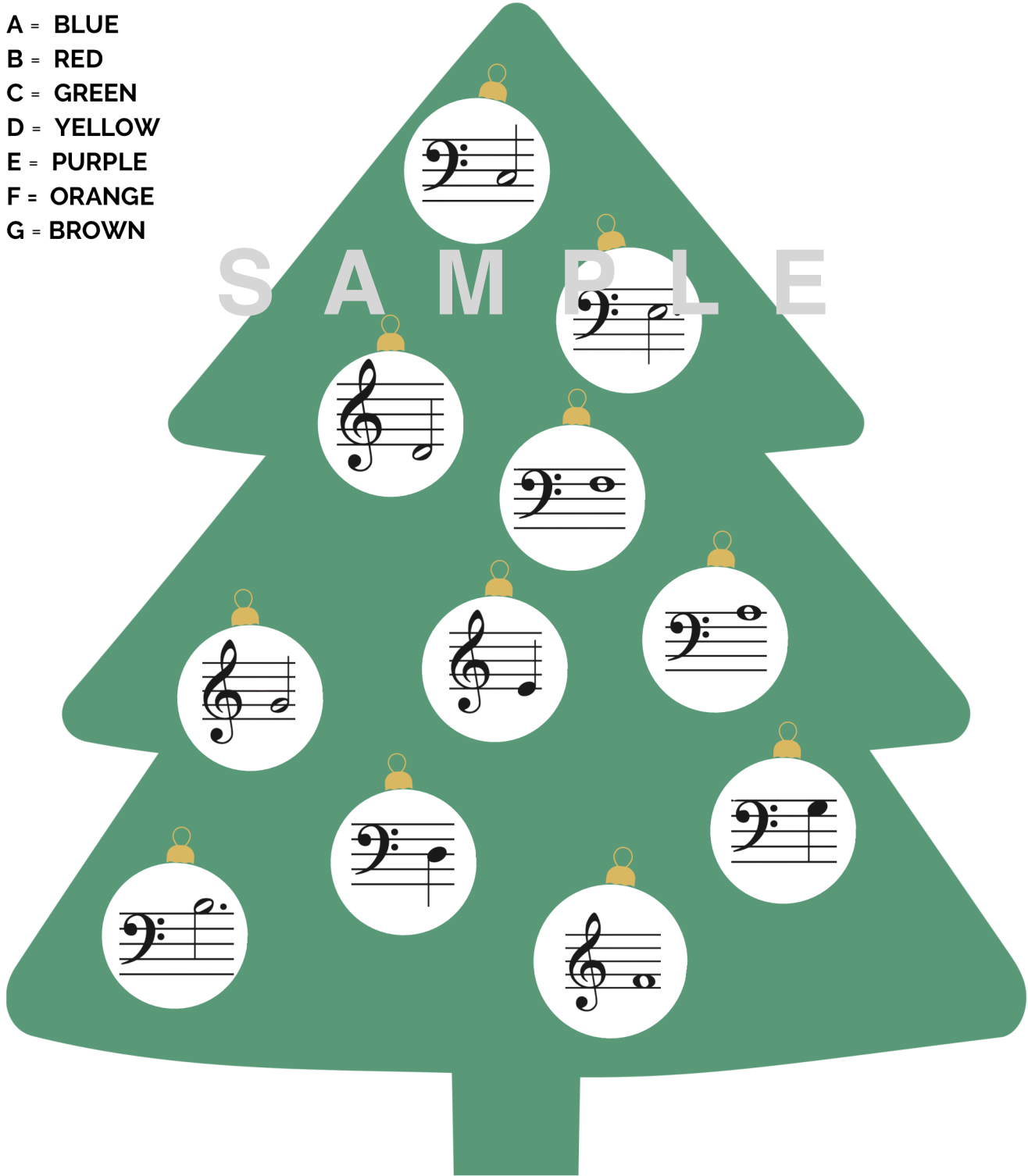
ELEMENTARY

Notes: Bass C to Treble G

Color each ornament as follows:

- A = BLUE
- B = RED
- C = GREEN
- D = YELLOW
- E = PURPLE
- F = ORANGE
- G = BROWN

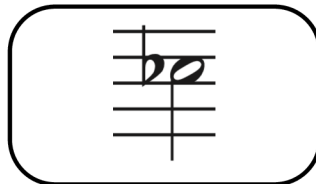
S A M P L E



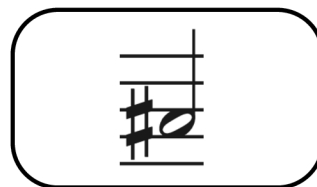
ELEMENTARY

Flats and Naturals

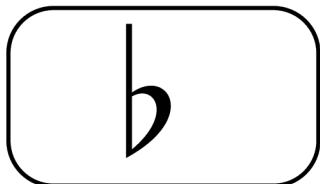
Draw a line connecting each **flat** to the melted snowman.
Put an "X" through each example that is not a flat.



up a half step from F



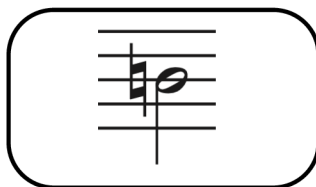
down a half step from D



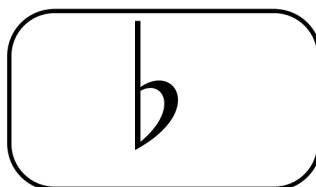
SAMPLE

Draw a line connecting each **natural** to the picture of the natural sign.
Put an "X" through each example that is not a natural.

down a half step from A



always a white key



ELEMENTARY

Notes: LH Bass G, A, B, C, D

Draw a line connecting each note to the picture that starts with the same letter.



GINGERBREAD
MAN



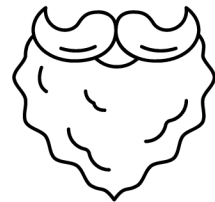
S A M P L E



ANTLERS



BEARD



CANDY
CANE



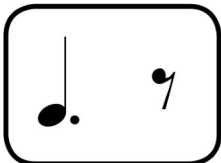
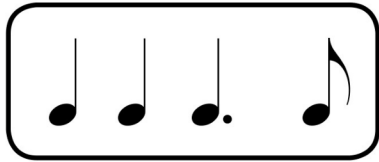
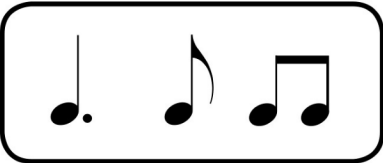
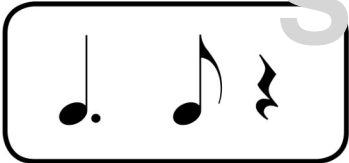
DECEMBER



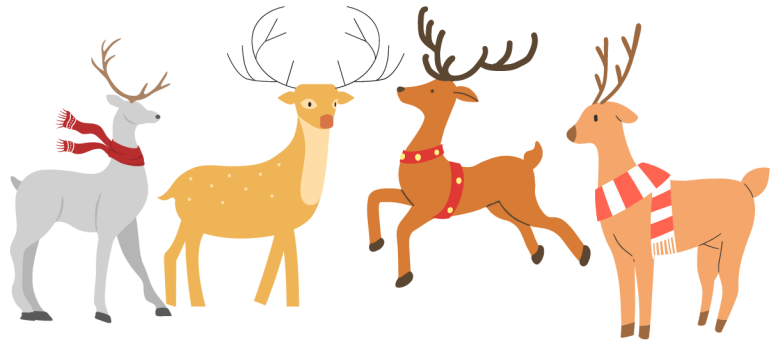
LATE ELEMENTARY

8th Rests and Dotted Quarters

For each rhythm pattern below, add up the beats.
Then, draw a line connecting it to the picture that has the same number.



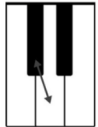
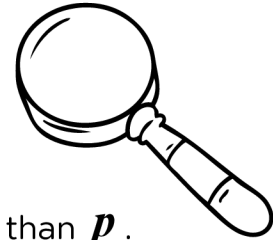
S A M P L E



LATE ELEMENTARY

Terms and Symbols

Fill in the blanks, then find your answers in the puzzle.
Circle words going across, up and down, and diagonally.



This is a _____ step.

pp is _____ than *p*.

S A M P L E

ff is _____ than *f*.

$\frac{4}{4}$ is a _____ signature.

b This is a _____.

_____ 8th notes equal
a quarter note.



T	W	O	R	L	S
H	I	I	J	X	O
A	H	M	L	F	F
L	W	E	E	F	T
F	L	A	T	L	E
L	O	U	D	E	R

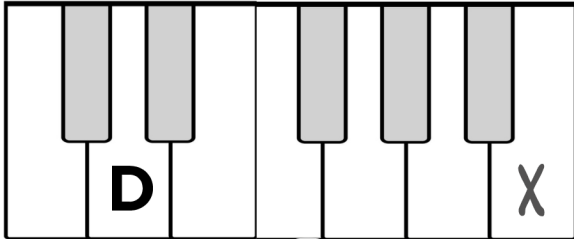
Answers: HALF, LOUDER, FLAT, SOFTER, TIME, TWO.

LATE ELEMENTARY

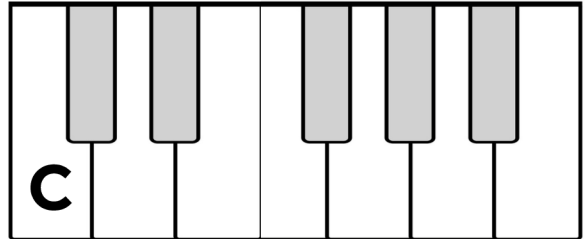
6ths and 7ths / Interval Review

For each keyboard, put an "X" on the proper key.

6th higher

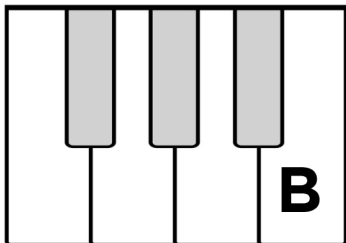


7th higher

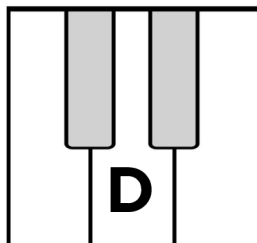


Ex: S A M P L E

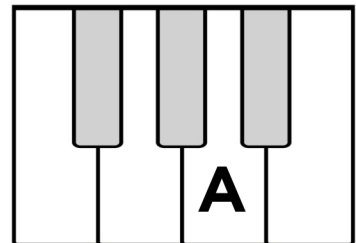
4th lower



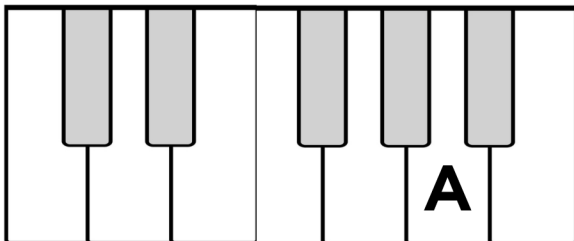
2nd higher



3rd lower



6th lower



5th higher

