



THE BIG
DIGITAL
Activity Sheets
BOOK 2

80 Activity Sheets!

EARLY ELEMENTARY TO
LATE ELEMENTARY

carolmatzpiano.com

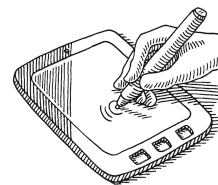
THE BIG DIGITAL *Activity Sheets* BOOK 2 BY CAROL MATZ

STUDIO-LICENSE TERMS

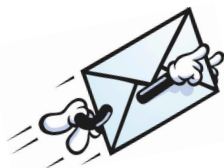
This PDF is licensed for use by ONE PIANO STUDIO ONLY. Teachers may print unlimited copies, but only for use with their own students. This PDF may not be resold or distributed, except as described above.

For inquiries, contact us at: info@carolmatzpiano.com

In addition to printing, this PDF may be loaded to a tablet (such as an iPad®) for use with apps that allow you to write on the music with a stylus or finger. For more information on this, refer to "**Using PDFs on Tablets**" in the FAQ section at carolmatzpiano.com



[Click here](#) for tips on sharing the materials with your students!



BDB17

© Copyright 2025 by Carol Matz

All Rights Reserved Studio-Licensed for Purchaser

CONTENTS

EARLY ELEMENTARY

Notes (Whole/Half/Quarter).....	5
Notes: Bass F, Mid C, Treb G.....	7
Rests (Whole/Half/Quarter).....	9
Notes: RH Mid C, D, E, F, G.....	11
Dotted Half Note.....	13
Note & Rest Values Review.....	15
Time Signatures (4/4 and 3/4).....	17
Notes: LH Bass F, G, A, B, Mid. C.....	19
Dynamics (p, mp, mf, f).....	21
Note Review Middle C Position.....	23
Parts of the Staff.....	25
Note & Rest Review.....	27
Note & Terms Review.....	29
Terms and Symbols.....	31
Skip, Step, or Repeat.....	33
Notes: LH Bass C, D, E, F, G.....	35
Staccato vs. Legato.....	37
Notes: LH Bass C to Middle C.....	39
Octaves.....	41
Ties vs. Slurs.....	43

ELEMENTARY

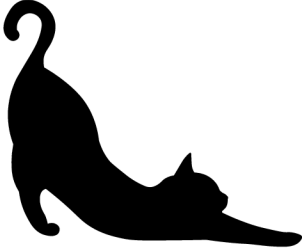
Notes: Bass C to Treble G.....	45
Whole Steps vs. Half Steps.....	47
Sharps.....	49
Sharp & Half Step Review.....	51
Flats and Naturals.....	53
Sharps, Flats, Naturals, Enharmonics....	55
Notes: RH Treble C, D, E, F, G.....	57
8th Notes.....	59
Terms and Symbols.....	61
Note Review.....	63
2nds and 3rds.....	65
4ths and 5ths.....	67
Notes: LH Bass G, A, B, C, D.....	69
Notes: RH Treble G, A, B, C, D.....	71
I, IV, V7 Chords in C and G.....	73

LATE ELEMENTARY

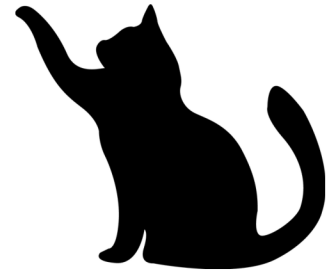
8th Rests and Dotted Half Notes.....	75
I, IV, V7 Chords in C, G, and F.....	77
Terms and Symbols.....	79
Ledger-Line Notes.....	81
6ths and 7ths / Interval Review.....	83

EARLY ELEMENTARY**Notes: RH Mid C, D, E, F, G**

Complete the rhyme by writing the letter names in the blanks.



My bla__k __at __oes to



sl__ep in his b__ __,



but wh__n I wak__ up,

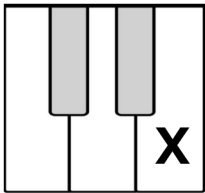




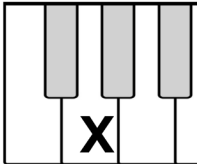


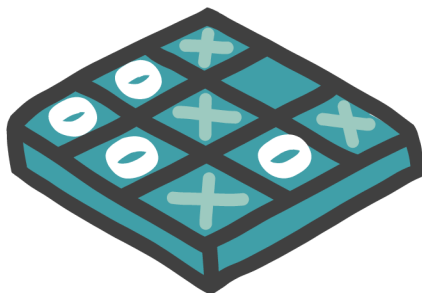
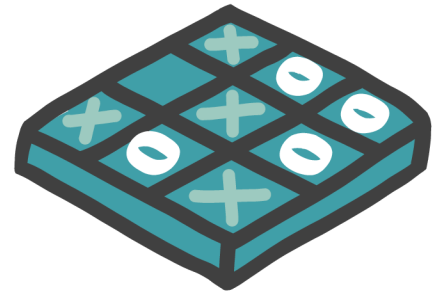
he's sle__pin__ on my hea __!

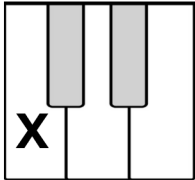

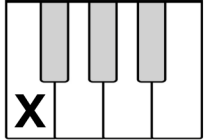



EARLY ELEMENTARY

Time Signatures (4/4 and 3/4)

On each "tic tac toe" board, draw a line connecting three boxes that have the same note. The line may be drawn across, up and down, or diagonally.

F		
		B
	G	



		
G	F	
		D

EARLY ELEMENTARY

Notes: LH Bass F, G, A, B, Mid. C

Color each section of the parrot as follows:

- Color F **RED**
- Color G **GREEN**
- Color A **ORANGE**
- Color B **BLUE**
- Color C **YELLOW**

Color the remaining sections
any colors you like!



EARLY ELEMENTARY

Parts of the Staff

Fill in the blanks, then find your answers in the puzzle.
Circle words going across, and up and down.
Answers are at the bottom of the page, upside-down!



$\frac{4}{4}$ This is a ____ signature.

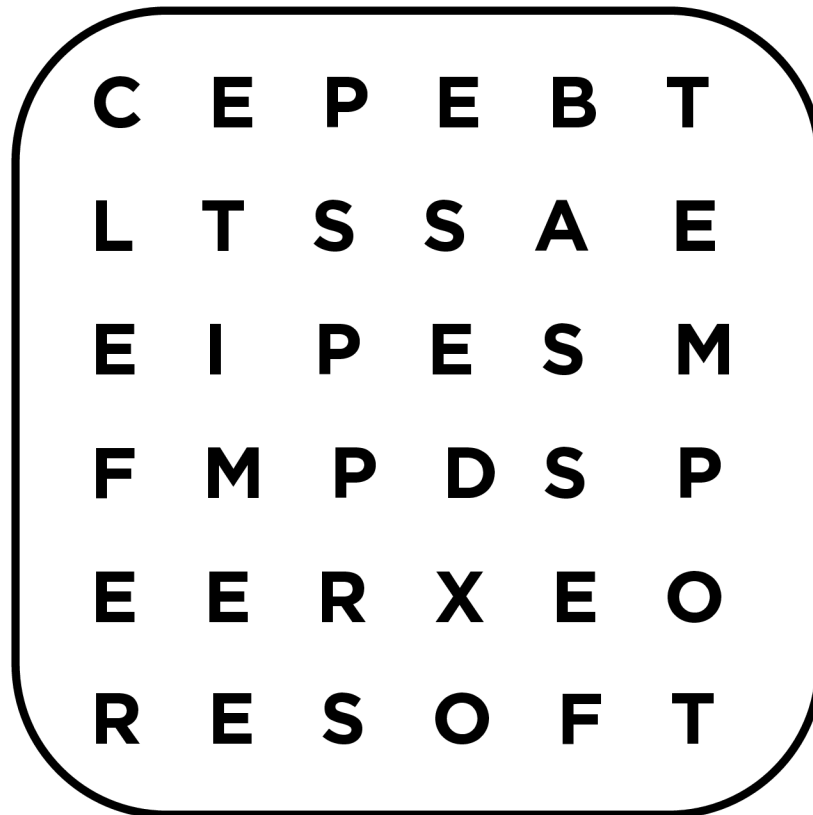
bass clef This is a _____ clef.

mp means play medium _____.

The _____ mark tells you the speed of the music.

treble clef This is a treble _____.

repeat sign This is a _____ sign.



Answers: TIME, SOFT, CLEF, BASS, TEMPO, REPEAT

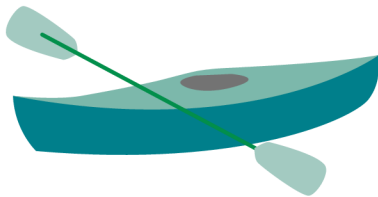
EARLY ELEMENTARY

Staccato vs. Legato

Circle *staccato* or *legato* for each example below.

(Answers are at the bottom of the page, upside-down.)

- 1.** Paddling on a smooth river



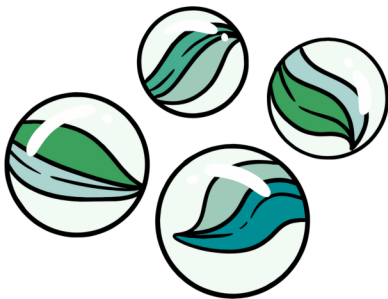
staccato *legato*

- 2.** Raindrops hitting the roof



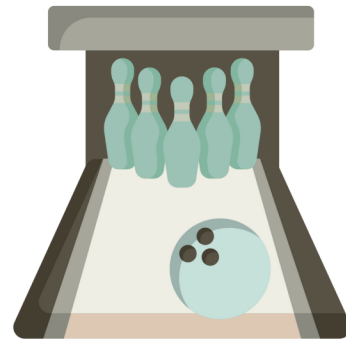
staccato *legato*

- 3.** Marbles dropped on the floor



staccato *legato*

- 4.** A bowling ball rolling smoothly on the lane



staccato *legato*

Answers: 1. legato, 2. staccato, 3. staccato, 4. legato

ELEMENTARY

Sharps

Draw a line connecting each **sharp** to the picture of the sharp pencil.
Put an **X** through each example that is **not** a sharp.

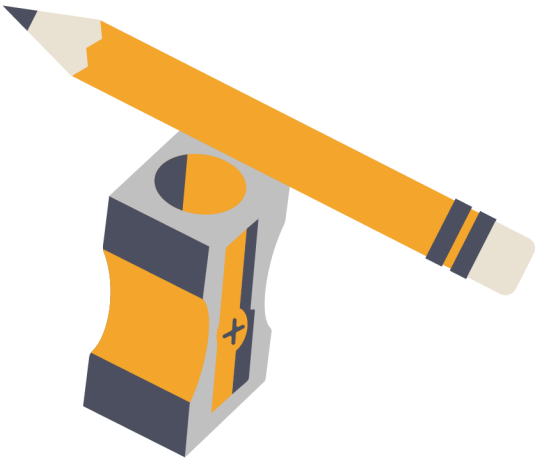


Diagram illustrating the connection between musical sharps and a sharp pencil. The page contains several boxes with musical symbols and text, and a central illustration of a yellow pencil and a sharpener.

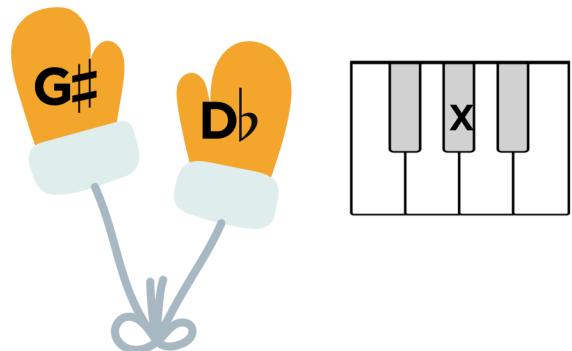
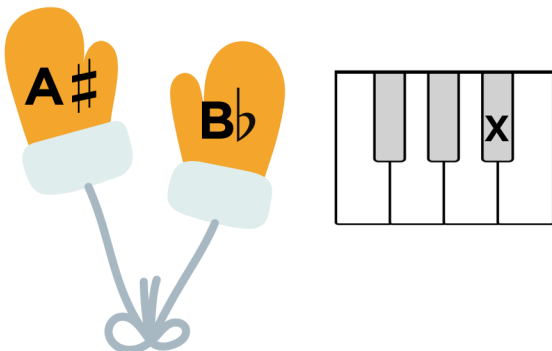
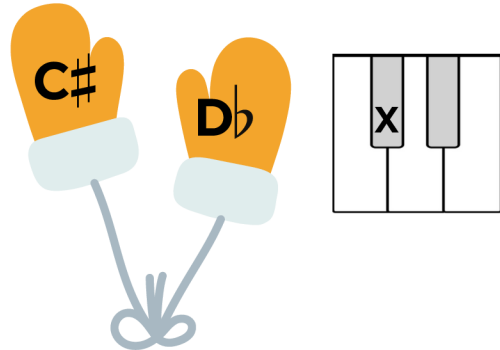
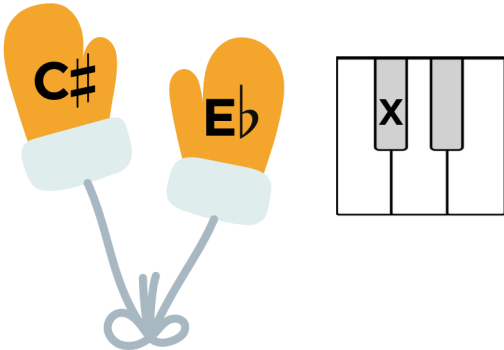
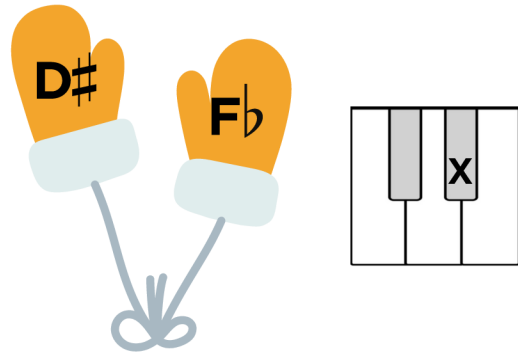
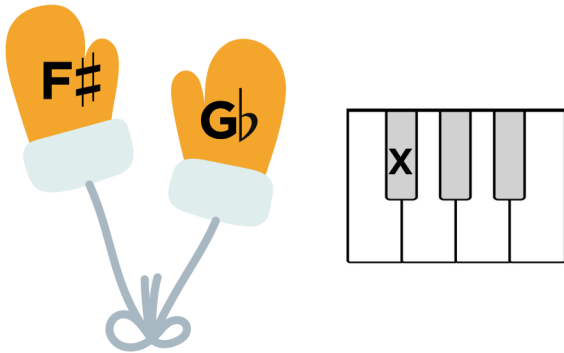
- Box 1 (top left): A musical staff with a sharp sign (#) on the second line.
- Box 2 (middle left): A lowercase letter 'b'.
- Box 3 (middle): A musical staff with a bass clef and a note on the second line.
- Box 4 (middle right): A musical staff with a sharp sign (#) on the second line and a note on the second line.
- Box 5 (bottom left): A sharp sign (#) on a staff.
- Box 6 (bottom middle): A musical staff with a bass clef and a note on the second line.
- Box 7 (bottom right): Text: "up a half step from G".
- Box 8 (middle left): Text: "up a half step from C".

ELEMENTARY

Sharps, Flats, Enharmonics

Each pair of mittens should have **2 names for the same key on the piano** (one sharp name, and one flat name).

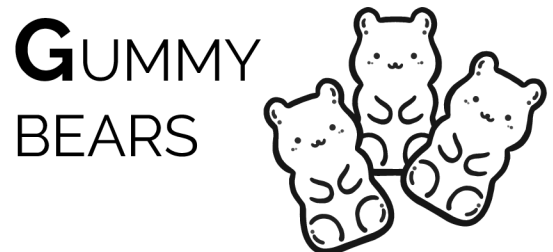
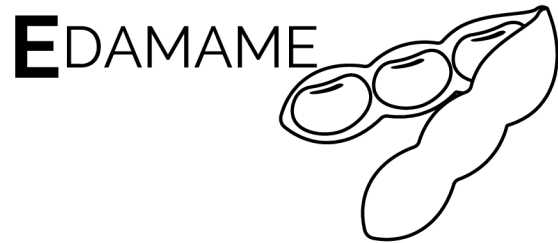
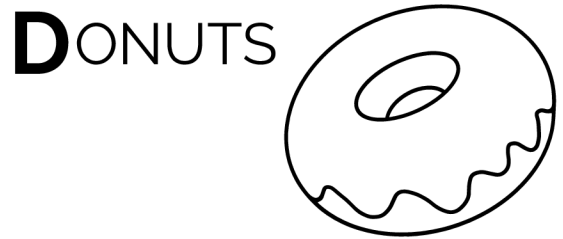
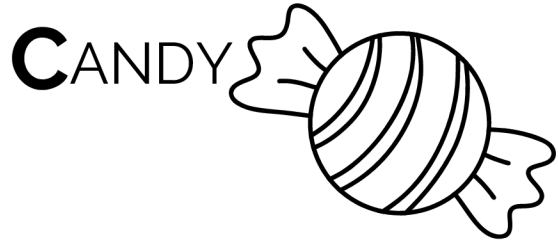
Put an "X" through any pair that does not match.



ELEMENTARY

Notes: RH Treble C, D, E, F, G

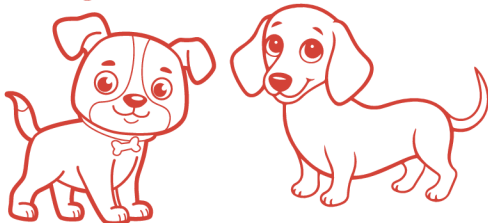
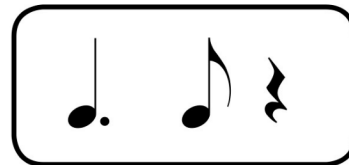
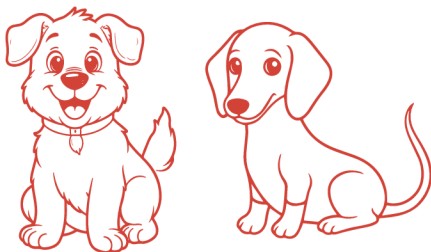
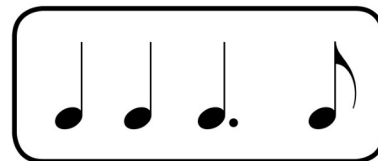
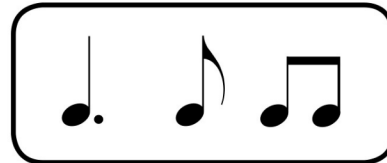
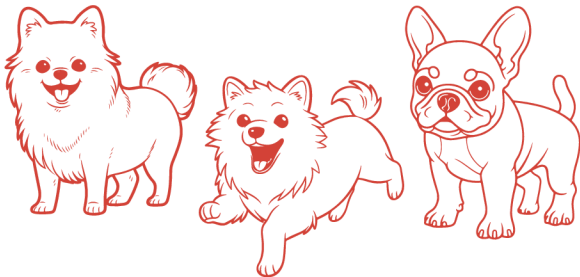
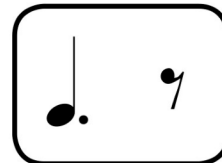
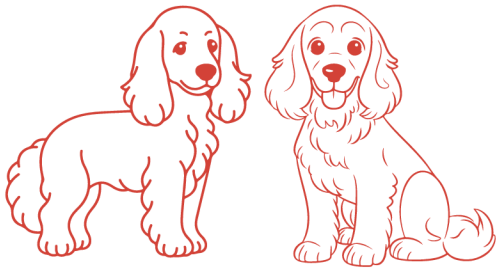
Draw a line connecting each note to the snack that starts with the same letter.



LATE ELEMENTARY

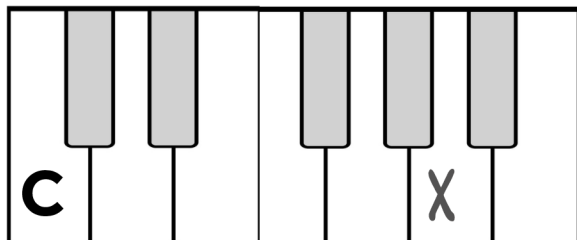
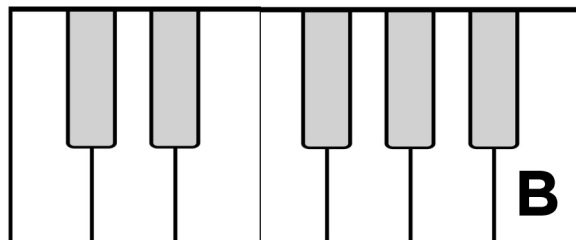
8th Rests and Dotted Half Notes

For each rhythm pattern below, add up the beats.
Then, draw a line connecting it to the picture that has the same number.

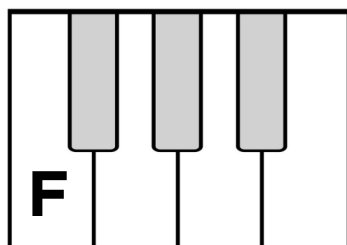
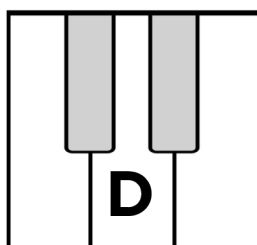
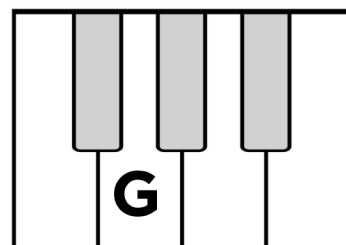
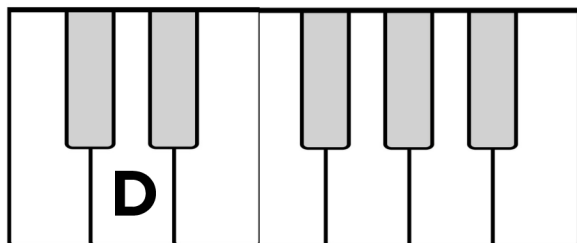
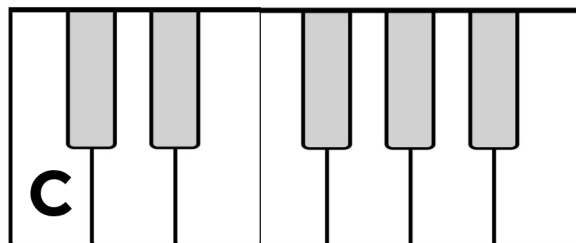
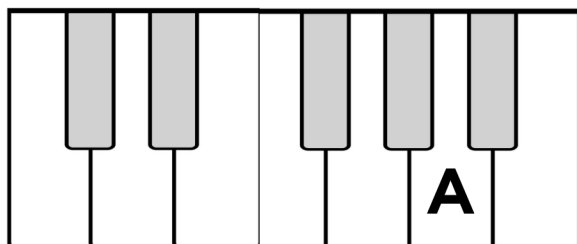
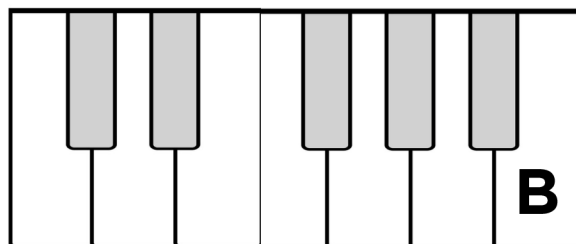


LATE ELEMENTARY**6ths and 7ths / Interval Review**

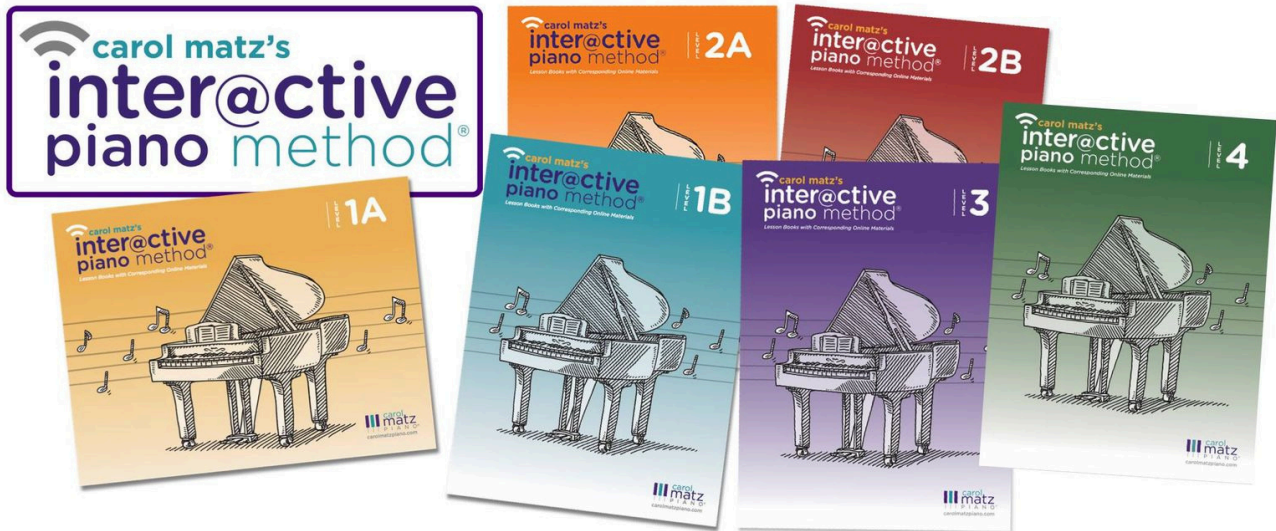
For each keyboard, put an "X" on the proper key.

6th higher**7th lower**

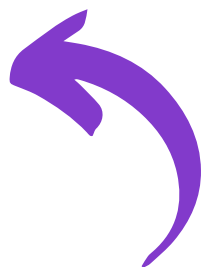
Ex:

4th higher**2nd lower****3rd higher****5th higher****7th higher****6th lower****5th lower**

Click below to discover more from Carol Matz!



Courses for Teachers!



Check out my new NOVEL!