

Enjoy this FREEBIE from:



[Click for](#)
[The Big Digital](#)
[Book Sale](#)
[THRU JANUARY!](#)

Bass Clef Line Notes

These are the **bass clef line notes**:



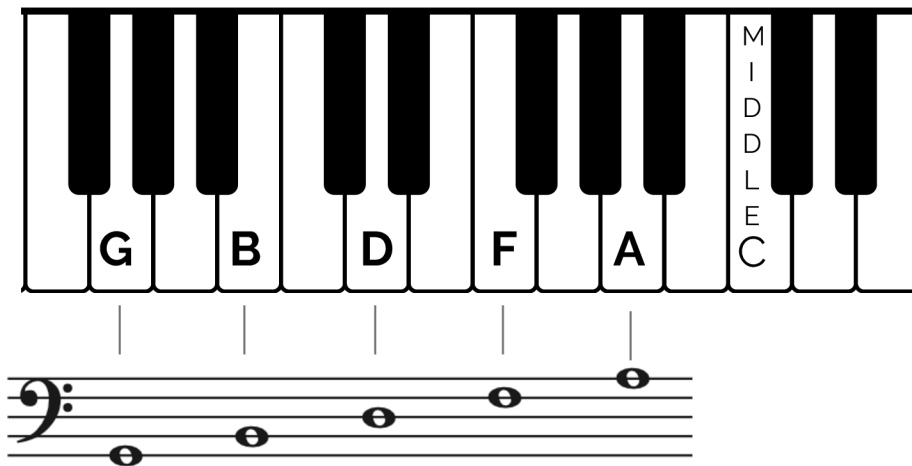
G B D F A

How to remember:
Grizzly **B**ears **D**on't **F**ear **A**nthing

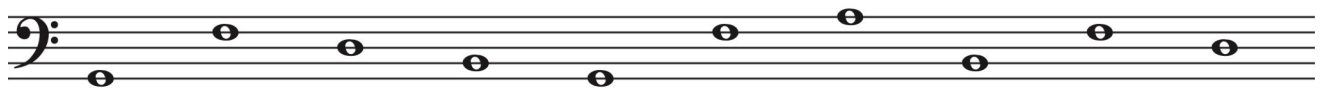
(Your teacher may have another fun way to remember!)

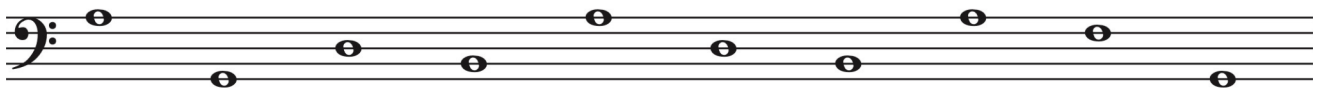
The diagram below shows where these notes are on the keyboard.

Play these notes on the keyboard while saying the letter names out loud:



Write the letter name under each note below. **Hint:** Place your pencil point on line 1 and move it up the staff lines, while thinking "Grizzly Bears Don't Fear Anything."





Bass Clef Lines Notes, cont.

Write the letter name under each line note to spell words.

— l — — L — — — L — — — l —

— — — — Y — R — — — — —

T — — — — L — — — — S R — —

— — T — — Y — l — — — — N —

Write a line note above each letter to spell the words below.

Be sure to draw the stems correctly (see "Stem Direction" on page 9).

Ex:

B A G A D D F A D B A D

Bass Clef Space & Line Notes

Write the letter name under each bass-clef note to spell words.



— — Y — — S — — — — — T



— R — — — L — — — — — L —



— — — — H — — M — — — —



H — — — — L — — — — R — — — —



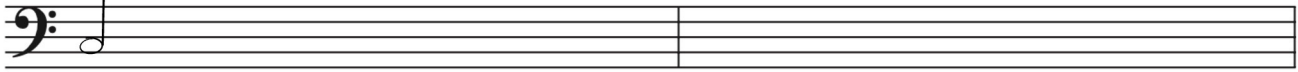
— — — R M — — — — — — — L —

Bass Clef Space & Line Notes, cont.

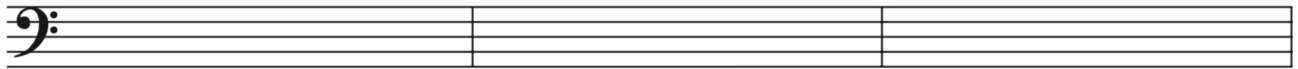
Write a note above each letter to spell the words below.

Be sure to draw the stems correctly (see "Stem Direction" on page 9).

Ex:



C A G E D B A G G A G E



A D D E D E D G E F E E D



F A D E D C A G E B A D G E

Draw an "X" through each wrongly labeled note.

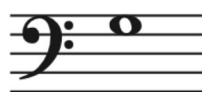
Ex:



G line note



A space note



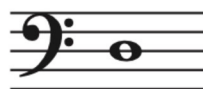
E space note



A line note



C space note



B line note



A line note



G space note

Grand Staff—Writing Notes, cont.

Write a note on each staff for the letter names below.

Ex:

A grand staff with two staves (treble and bass clefs) and a brace on the left. The first staff contains four quarter notes: D (middle C), G (G4), C (C5), and F (F5). The second staff is empty.

A grand staff with two staves (treble and bass clefs) and a brace on the left. The first staff contains four empty boxes for writing notes, labeled B, E, A, and G from left to right. The second staff is empty.

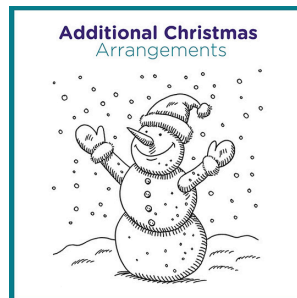
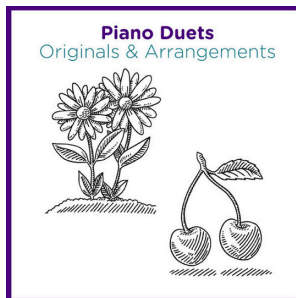
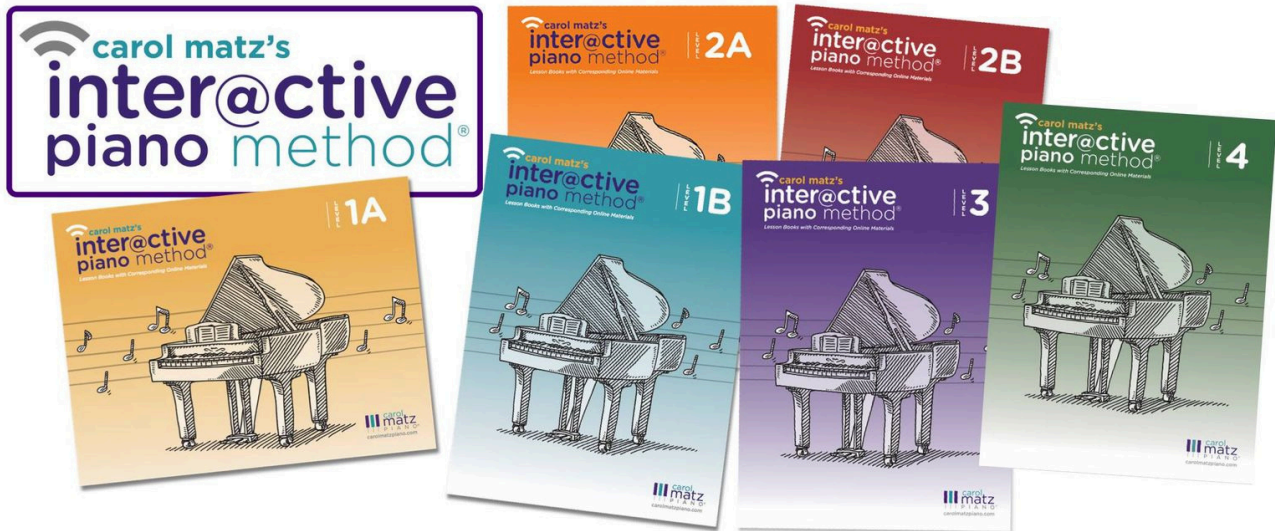
For each example below, **write 2 more notes** on the grand staff.

Ex:

A grand staff with two staves (treble and bass clefs) and a brace on the left. The first staff contains four whole notes: A (A4), B (B4), D (D5), and F (F5). The second staff contains one whole note: D (D4).

A grand staff with two staves (treble and bass clefs) and a brace on the left. The first staff contains four empty boxes for writing notes, labeled G, C, E, and G from left to right. The second staff contains one whole note: G (G2).

Click below to discover more from Carol Matz!



Courses for Teachers!



carolmatzpiano.com