



THE BIG
DIGITAL
Note Spelling
BOOK

75 Pages

Beginner to Ledger-Line Reading!

carolmatzpiano.com

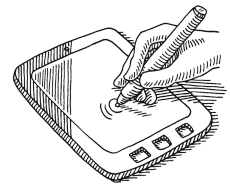
THE BIG DIGITAL *Note Spelling* BOOK

LICENSE TERMS

This PDF is licensed for use by **one piano studio only**. Teachers may print unlimited copies, but only for use with their own students. This PDF may not be resold or distributed, except as described above.

For inquiries, contact us at: info@carolmatzpiano.com

In addition to printing, this PDF may be loaded to a tablet (such as an iPad®) for use with apps that allow you to write on the music with a stylus or finger. For more information on this, refer to "**Using PDFs on Tablets**" in the FAQ section at carolmatzpiano.com



[Click here](#) for tips on sharing the materials with your students!



BDB12

© Copyright 2024 by Carol Matz

All Rights Reserved Studio-Licensed for Purchaser

CONTENTS

PART 1

DRAWING NOTES & RESTS

Staff Spaces & Lines.....	6
Drawing Notes.....	8
Stem Direction.....	9
Drawing Rests.....	10
Parts of the Grand Staff.....	11
Drawing Clefs.....	12

TREBLE CLEF NOTES

Space Notes.....	14
Line Notes.....	16
Space & Line Notes.....	18
Notes Outside the Staff.....	20

BASS CLEF NOTES

Space Notes.....	22
Line Notes.....	24
Space & Line Notes.....	26
Notes Outside the Staff.....	28

SHARPS, FLATS, & NATURALS

Sharps, Flats, & Naturals.....	30
Drawing Sharps, Flats, & Naturals.....	31
Sharp, Flat, & Natural Notes.....	32

GRAND STAFF EXERCISES

Naming Notes.....	34
Writing Notes.....	36

REVIEW & SUMMARY

Part 1 Review.....	39
Part 1 Summary.....	42

CONTENTS (cont.)

PART 2

LEDGER-LINE NOTES

Introduction to Ledger Lines.....44

OUTER LEDGER-LINE NOTES

Treble Clef Outer.....46

Bass Clef Outer.....48

All Outer Ledgers.....50

INNER LEDGER-LINE NOTES

Treble Clef Inner.....52

Bass Clef Inner.....54

All Inner Ledgers.....56

MORE LEDGER-LINE ACTIVITIES

More About Inner Ledger-Line Notes.....58

Ledger-Line Note Review.....59

NOTE SPELLING WITH KEY SIGNATURES

Key of G Major.....62

Key of F Major.....63

Key of D Major.....64

Key of A Major.....65

ACCIDENTALS & ENHARMONICS

Accidentals.....66

Enharmonics on the Keyboard.....68

Enharmonics on the Staff.....69

White-Key Enharmonic Notes.....70

Enharmonic Notes Review.....71

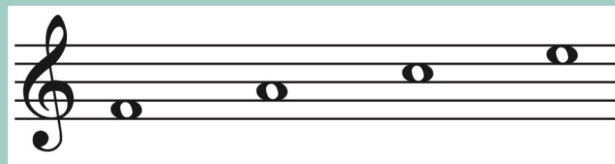
REVIEW & SUMMARY

Part 2 Review.....72

Part 2 Summary.....75

Treble Clef Space Notes

These are the **treble clef space notes**:

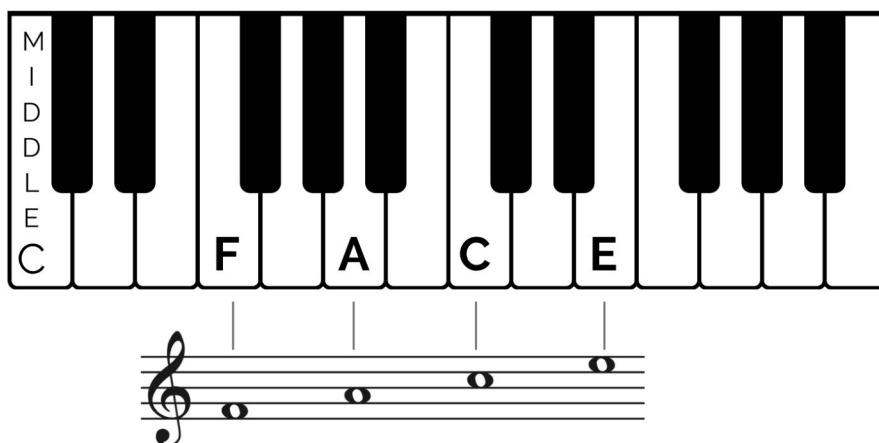


F A C E

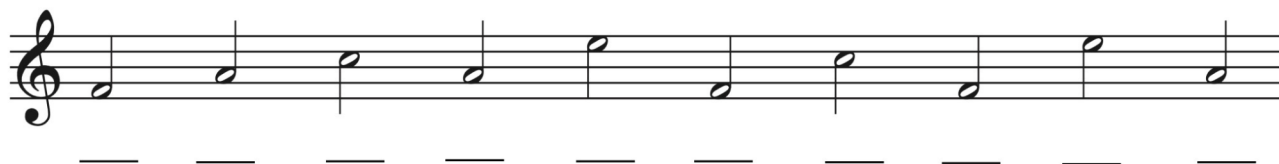
Notice that the letter names spell the word **FACE**.

The diagram below shows where these notes are on the keyboard. The notes **start on F above Middle C**, and move up every other key.

Play these notes on the keyboard while saying the letter names out loud:



Write the letter name under each note below. **Hint:** Place your pencil point in space 1 and move it up the staff spaces, while thinking "F-A-C-E."



Treble Clef Space & Line Notes

Write the letter name under each treble-clef note to spell words.



— — — N P — — — R — — —



— — N — — S — — — L — —



— — — L — — T — — O — —



— U — — — — — L — R — —



— — — — — — — R — — —

Treble Clef Space & Line Notes, cont.

Write a note above each letter to spell the words below.

Be sure to draw the stems correctly (see "Stem Direction" on page 9).

Ex:

A D D B E E F B E D C A B

B A D G E B E A D C A G E

F A D E D B A D D E C A D E

S A M P L E

Draw an "X" through each wrongly labeled note.

Ex:

E line note

F space note

B line note

C space note

A space note

F line note

E space note

C line note

Drawing Sharps, Flats, and Naturals

The **middle part** of a sharp, flat, or natural can be either:



on a line

OR



in a space

This gives the symbol its letter name **in a key signature**:



F# in the key signature



Bb in the key signature

Trace the sharps and flats below, then draw four more of each symbol in the boxes.

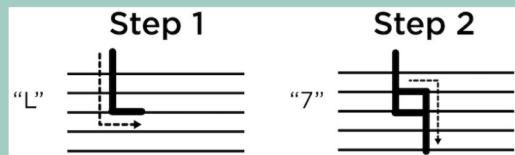
SHARPS



FLATS



When drawing a **NATURAL**, think of **L + 7**:

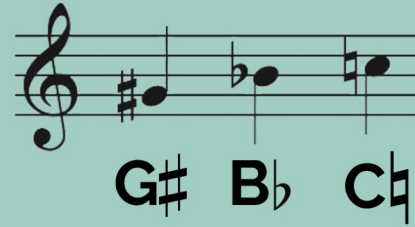


Practice drawing naturals in the boxes below.



Sharps, Flat, and Natural Notes

Sharps, flats, and naturals are written in front of notes.



But, when naming a note, you say or write the **letter name first**. For example: **G#** or "G-sharp."

Draw a **sharp** in front of each note below. Then, write the letter names in the blanks. Notice the clef sign.

Ex:

A musical staff in bass clef with a key signature of one sharp (F#). The first note is D sharp (D#). Below the staff, the label D# is written, followed by eight blank lines for writing.

Draw a **flat** in front of each note below. Then, write the letter names in the blanks. Notice the clef sign.

Ex:

A musical staff in treble clef with a key signature of two flats (Bb, Eb). The first note is B flat (Bb). The word "SAMPLE" is written across the staff in large, light gray letters. Below the staff, the label Bb is written, followed by eight blank lines for writing.

Draw a **natural** in front of each note below. Then, write the letter names in the blanks. Notice the clef sign.

Ex:

A musical staff in treble clef with a key signature of two sharps (F#, C#). The first note is E natural (E). Below the staff, the label E is written, followed by eight blank lines for writing.

Write the letter name for each note below. Notice the clef sign.

A musical staff in bass clef with a key signature of one flat (Bb). The notes are: Bb, G#, F#, Eb, D#, C#, Bb, A#, G#. Below the staff, there are eight blank lines for writing.

Grand Staff–Naming Notes

Each grand staff below has **both treble clef and bass clef notes**.

Write the letter names under the notes to spell words.

A grand staff with a treble clef on the top staff and a bass clef on the bottom staff. The treble staff contains four quarter notes: G4, A4, B4, and C5. The bass staff contains four quarter notes: G2, A2, B2, and C3. Below the staff, the letters P, I, U, and T are printed, each followed by a dashed line for a missing letter.

P _ _ _ I _ _ _ U _ _ T _

A grand staff with a treble clef on the top staff and a bass clef on the bottom staff. The treble staff contains four quarter notes: G4, A4, B4, and C5. The bass staff contains four quarter notes: G2, A2, B2, and C3. Below the staff, the letters R, R, and O are printed, each followed by a dashed line for a missing letter.

R _ _ _ R _ _ O _ _ _

A grand staff with a treble clef on the top staff and a bass clef on the bottom staff. The treble staff contains six quarter notes: G4, A4, B4, C5, B4, and A4. The bass staff contains six quarter notes: G2, A2, B2, C3, B2, and A2. The word 'SAMPLE' is written in large, semi-transparent letters across the treble staff. Below the staff, the letters R and N are printed, each followed by a dashed line for a missing letter.

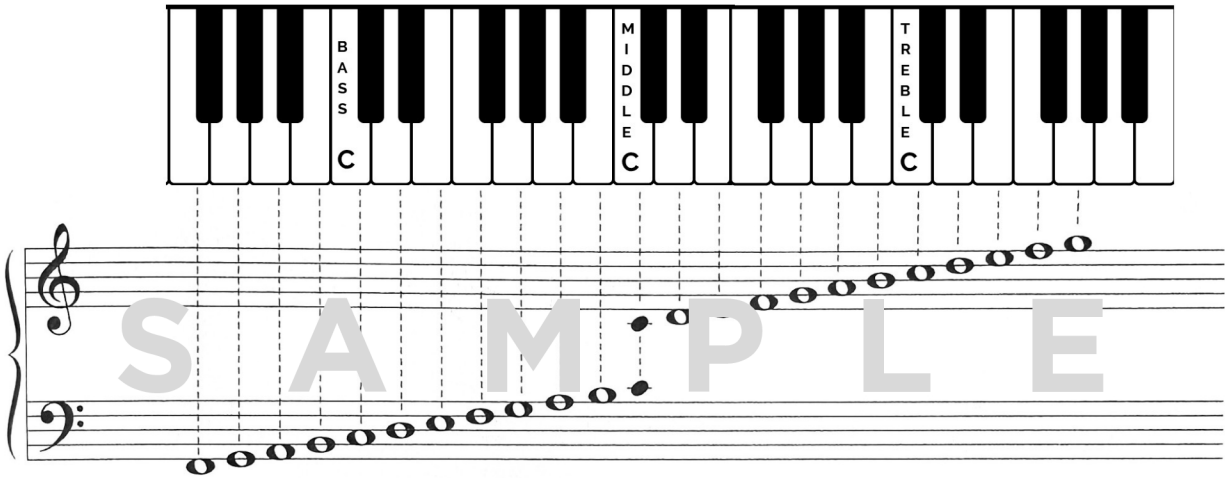
S A M P L E

_ R _ _ _ N _ _ _

A grand staff with a treble clef on the top staff and a bass clef on the bottom staff. The treble staff contains four quarter notes: G4, A4, B4, and C5. The bass staff contains four quarter notes: G2, A2, B2, and C3. Below the staff, the letters T, I, and K are printed, each followed by a dashed line for a missing letter.

_ _ _ T _ _ _ I _ _ _ K _ _ _

PART 1 SUMMARY



SHARPS

This is a **sharp**.
It means to play the closest key **up / to the right**.

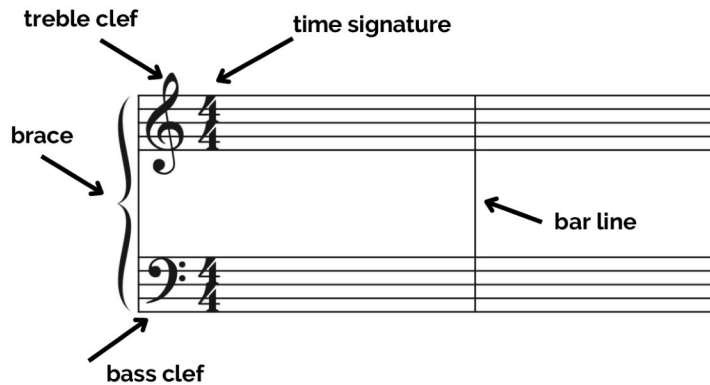
FLATS

b This is a **flat**.
It means to play the closest key **down / to the left**.

NATURALS

♮ This is a **natural**.
A natural is **ALWAYS** a white key!
It **cancels** a sharp or a flat.

THE GRAND STAFF



Treble Clef Outer Ledger-Line Notes

These are the **treble clef outer ledger-line notes**:

A

from "ACE"

A B C D E

A C (middle) E

The diagram below shows where these notes are on the keyboard.
The notes **start on A, two octaves above Middle C**.

Play these notes on the keyboard while saying the letter names out loud:

M
I
D
D
L
E
C

T
R
E
B
L
E
C

A B C D E

A B C D E

S A M P L E

Remember that the note on **1** ledger line above the treble staff is **A** (from "ACE").

The next note moving up is **B**, sitting on top of the first ledger line.

The next note moving up is **C**, which is on 2 ledger lines, and so forth.

All Outer Ledger-Line Notes

Write the letter name under each note to spell words.

A musical staff with a treble clef and a bass clef. The treble clef has four notes: G4, A4, B4, and C5. The bass clef has four notes: G2, F2, E2, and D2. The notes are arranged in two measures. The first measure contains G4, A4, and B4 in the treble, and G2 and F2 in the bass. The second measure contains C5, B4, and A4 in the treble, and E2 and D2 in the bass.

— — — **K** **H** — — — — — **H** —

A musical staff with a treble clef and a bass clef. The treble clef has four notes: G4, A4, B4, and C5. The bass clef has four notes: G2, F2, E2, and D2. The notes are arranged in two measures. The first measure contains G4, A4, and B4 in the treble, and G2 and F2 in the bass. The second measure contains C5, B4, and A4 in the treble, and E2 and D2 in the bass.

S **A** **M** **P** **L** **E**

— — **V** — **N** — — — — — **N** —

A musical staff with a treble clef and a bass clef. The treble clef has four notes: G4, A4, B4, and C5. The bass clef has four notes: G2, F2, E2, and D2. The notes are arranged in two measures. The first measure contains G4, A4, and B4 in the treble, and G2 and F2 in the bass. The second measure contains C5, B4, and A4 in the treble, and E2 and D2 in the bass.

— **I** — — — — — **R** — — — — — **T** —

More About Inner Ledger-Line Notes

Each **inner** ledger-line note can be written as a note **on the other staff**.

These two ways of writing the note stand for **the same key on the keyboard!**

The diagram illustrates the relationship between piano keys and musical notation. A piano keyboard is shown with white keys labeled F, G, A, B, C, D, E, F, G, A, B. The word 'MIDDLE' is written vertically above the C, D, E, F, G, A, B keys. Below the keyboard, a musical staff with a treble clef and a bass clef shows corresponding notes. A green box on the left says 'Treble Clef Inner Ledger-Line Notes' with an arrow pointing to notes on the treble staff. A green box on the right says 'Bass Clef Inner Ledger-Line Notes' with an arrow pointing to notes on the bass staff.

For each inner ledger-line note, **write a matching note on the other staff**

S A M P L E

Ex:

The example shows a musical staff with a treble clef and a bass clef. The treble staff has notes on the first ledger line (F) and the first line (C). The bass staff has notes on the first line (C) and the first ledger line (F).

For each note below, **write a matching ledger-line note on the other staff**.

Ex:

The example shows a musical staff with a treble clef and a bass clef. The treble staff has notes on the first ledger line (F) and the first line (C). The bass staff has notes on the first line (C) and the first ledger line (F).

Key of G Major

Sharps or flats that appear after the clef signs are called the **key signature**.

This **G MAJOR KEY SIGNATURE** means to automatically play ALL the F's in the music as F-sharps.

The **Key of G Major** has an **F#** in the key signature. All the F's—no matter where they are on the staff—should be played as **F#**.

The **Key of C Major** has no sharps or flats in its key signature. No notes are automatically sharpened or flattened.

SAMPLE

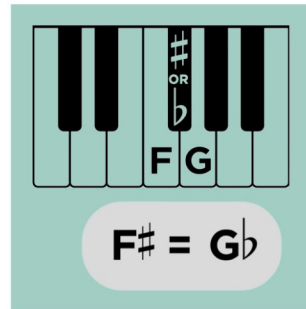
The examples below are written in the **key of G major**—with an **F#** in the key signature. Write the letter name under each note to spell words. Notice the clef signs.

Ex: **F#** **R** — — **S** — — — — **N** — —

— **L** — — **L** — — — — **O** — —

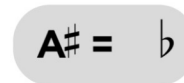
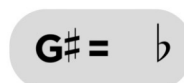
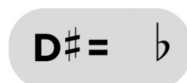
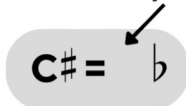
Enharmonics on the Keyboard

All the **black keys** on the keyboard can be spelled (or named) **TWO different ways**. One way is with a sharp, and the other way is with a flat. For example:

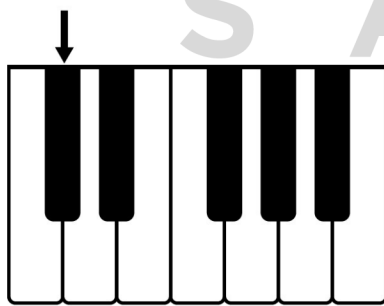


F# and **Gb** are the same key on the keyboard, with two different names—a **sharp name** and a **flat name**. These are called **enharmonics** (or enharmonic spellings).

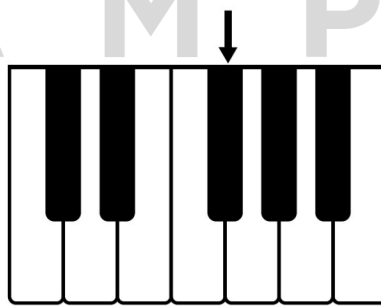
For each example below, write-in the correct letter name.



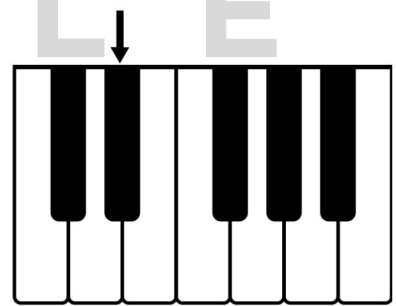
For each note below with an arrow, write two different letter names.



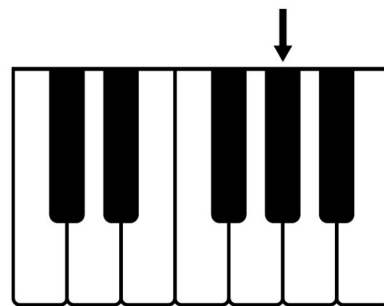
Ex: C# or Db



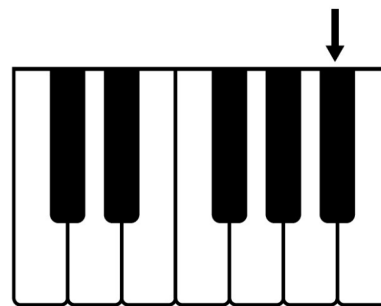
___ or ___



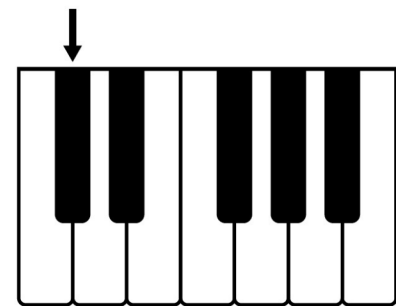
___ or ___



___ or ___



___ or ___



___ or ___

4. For each note below, write a matching ledger-line note on the other staff.

5. Name each key signature below.



Ex: Key of F

S A M P L E

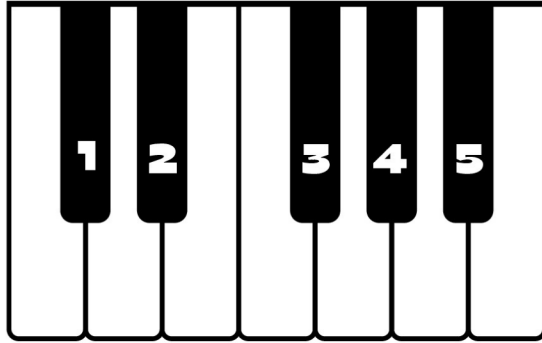
6. Write the letter name under each note. Notice the key signatures and clef signs.

Key of F Major

Key of A Major

Part 2 Review, page 3

7. For each numbered black key, write two different letter names (enharmonics).

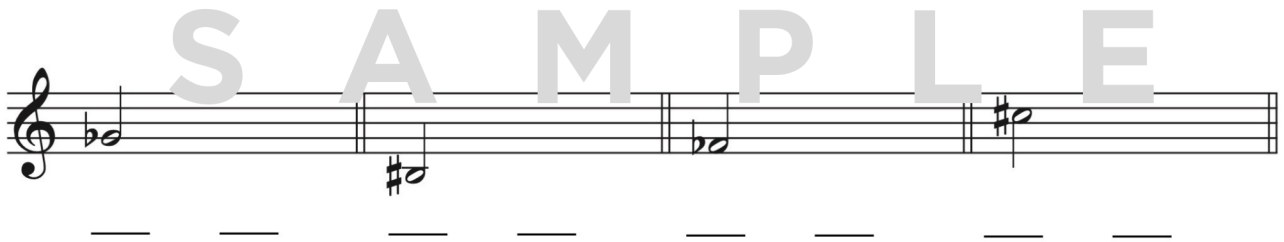


- Ex: 1. C# or Db
 2. ___ or ___
 3. ___ or ___
 4. ___ or ___
 5. ___ or ___

8. Draw an enharmonic note for each note below.
 Then, write the letter names for both notes.



Ex: Db C# ___ ___



9. Write an enharmonic letter name for each note. (The letter names will spell words.)



Ex: G# **L** ___ ___ ___ ___ **N** **M** ___ ___

PART 2 SUMMARY

Outer Ledger-Line Notes Inner Ledger-Line Notes

A B C D E

F G A B C D E F G

A B C D E

Key of C Key of F Key of G Key of D Key of A

S A M P L E

ENHARMONIC NOTES

C[#]/D^b D[#]/E^b F[#]/G^b G[#]/A^b A[#]/B^b

E/F^b F/E[#] B/C^b C/B[#]