

THE BIG
DIGITAL
Elementary
BOOK

35 Arrangements!

FAVORITES · CHRISTMAS · CLASSICS
WITH TEACHER DUETS!

Arrangements
May Contain
8th NOTES

THE BIG DIGITAL *Elementary* BOOK

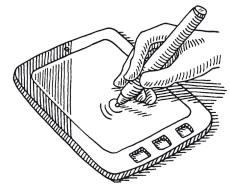
ARRANGED BY CAROL MATZ

LICENSE TERMS

The pieces in this PDF are licensed for use by **one piano studio only**. Teachers may print unlimited copies, but only for use with their own students. This PDF may not be resold or distributed, except as described above.

For inquiries, contact us at: info@carolmatzpiano.com

In addition to printing, this PDF may be loaded to a tablet (such as an iPad®) for use with apps that allow you to write on the music with a stylus or finger. For more information on this, refer to "**Using PDFs on Tablets**" in the FAQ section at carolmatzpiano.com



[Click here](#) for tips on sharing the materials with your students!



BDB08

© Copyright 2024 by Carol Matz

All Rights Reserved No Reproduction Allowed Without Permission

CONTENTS (ALPHABETICAL)

Allegro (Haydn).....	6	O Come, All Ye Faithful.....	44
Angels We Have Heard on High.....	8	Old Gray Mare, The.....	46
Baby Bumblebee.....	10	Over the River and Thru the Woods.....	48
Beethoven's Fifth Symphony.....	12	Pavane (Fauré).....	50
Chanukah Candle Blessings.....	14	Pop! Goes the Weasel.....	51
Dance of the Sugar-Plum Fairy.....	16	Rondo alla Turca.....	52
Down by the Bay.....	18	Russian Dance (from The Nutcracker)..	54
First Noel, The.....	20	Silent Night.....	56
Grand Valse Brilliante.....	22	Six Little Ducks.....	58
Hark! The Herald Angels Sing.....	24	Sleeping Beauty Waltz.....	60
Hava Naglia.....	26	Turkey in the Straw.....	62
Home on the Range.....	28	Twelve Days of Christmas, The.....	64
Jesu, Joy of Man's Desiring.....	30	We Wish You a Merry Christmas.....	68
Joy to the World.....	32	What Child Is This?.....	70
La Cucaracha.....	34	Wild Horseman.....	72
Merry Widow Waltz.....	36	Yellow Rose of Texas.....	74
Mozart's Symphony No. 40.....	38	You're a Grand Old Flag.....	76
O Chanukah, O Chanukah.....	42		

CONTENTS (BY CATEGORY)

FAVORITES

Baby Bumblebee.....	10
Down by the Bay.....	18
Hava Naglia.....	26
Home on the Range.....	28
La Cucaracha.....	34
Old Gray Mare, The.....	46
Over the River and Thru the Woods.....	48
Pop! Goes the Weasel.....	51
Six Little Ducks.....	58
Turkey in the Straw.....	62
Yellow Rose of Texas.....	74
You're a Grand Old Flag.....	76

CLASSICS

Allegro (Haydn).....	6
Beethoven's Fifth Symphony.....	12
Grand Valse Brilliante.....	22
Jesu, Joy of Man's Desiring.....	30
Merry Widow Waltz.....	36
Mozart's Symphony No. 40.....	38
Pavane (Fauré).....	50
Rondo alla Turca.....	52
Sleeping Beauty Waltz.....	60
Wild Horseman.....	72

CHRISTMAS / CHANUKAH

Angels We Have Heard on High.....	8
Chanukah Candle Blessings.....	14
Dance of the Sugar-Plum Fairy.....	16
First Noel, The.....	20
Hark! The Herald Angels Sing.....	24
Joy to the World.....	32
O Chanukah, O Chanukah.....	42
O Come, All Ye Faithful.....	44
Russian Dance (from The Nutcracker)....	54
Silent Night.....	56
Twelve Days of Christmas, The.....	64
We Wish You a Merry Christmas.....	68
What Child Is This?.....	70

Down by the Bay

Traditional

Arranged by Carol Matz

Moderately fast

1 4

Down by the bay, where the wa-ter-mel-on grow,

mf

1 3 1 2

Detailed description: This system contains the first four measures of the piece. The treble clef staff has a key signature of one sharp (F#) and a 4/4 time signature. The melody starts with a quarter rest, followed by a quarter note G4, a quarter note A4, and a quarter note B4, all beamed together and numbered '1'. A repeat sign follows, with a quarter note G4, a quarter note A4, and a quarter note B4, numbered '4'. The bass clef staff has a key signature of one sharp (F#) and a 4/4 time signature. It starts with a whole rest, followed by a quarter note G3, a quarter note A3, and a quarter note B3, all beamed together and numbered '1 3'. A repeat sign follows, with a quarter note G3, a quarter note A3, and a quarter note B3, numbered '1 2'.

5 4

back to my home, I dare not go,

Detailed description: This system contains measures 5 through 8. The treble clef staff has a key signature of one sharp (F#) and a 4/4 time signature. The melody starts with a quarter rest, followed by a quarter note G4, a quarter note A4, and a quarter note B4, all beamed together and numbered '5'. A repeat sign follows, with a quarter note G4, a quarter note A4, and a quarter note B4, numbered '4'. The bass clef staff has a key signature of one sharp (F#) and a 4/4 time signature. It starts with a quarter note G3, a quarter note A3, and a quarter note B3, all beamed together. A repeat sign follows, with a quarter note G3, a quarter note A3, and a quarter note B3, numbered '1 3'.

9 4 3 2 1 4 3

for if I do, my moth-er will say,

Detailed description: This system contains measures 9 through 12. The treble clef staff has a key signature of one sharp (F#) and a 4/4 time signature. The melody starts with a quarter rest, followed by a quarter note G4, a quarter note A4, and a quarter note B4, all beamed together and numbered '4'. A repeat sign follows, with a quarter note G4, a quarter note A4, and a quarter note B4, numbered '3 2 1'. The bass clef staff has a key signature of one sharp (F#) and a 4/4 time signature. It starts with a quarter note G3, a quarter note A3, and a quarter note B3, all beamed together. A repeat sign follows, with a quarter note G3, a quarter note A3, and a quarter note B3, numbered '2 5'.

Teacher Duet (Student plays one octave higher.)

Moderately fast

5 9 2 5 2

RH LH *mp*

Detailed description: This section is for a teacher duet. The top staff is the Right Hand (RH) and the bottom staff is the Left Hand (LH). Both have a key signature of one sharp (F#) and a 4/4 time signature. The RH starts with a quarter rest, followed by a quarter note G4, a quarter note A4, and a quarter note B4, all beamed together and numbered '5'. The LH starts with a quarter rest, followed by a quarter note G3, a quarter note A3, and a quarter note B3, all beamed together and numbered '2'. A repeat sign follows, with a quarter note G4, a quarter note A4, and a quarter note B4, numbered '9'. The LH has a quarter note G3, a quarter note A3, and a quarter note B3, numbered '5'. A repeat sign follows, with a quarter note G4, a quarter note A4, and a quarter note B4, numbered '2'. The LH has a quarter note G3, a quarter note A3, and a quarter note B3, numbered '2'.

The First Noel

Traditional
Arranged by Carol Matz

Moderately

The first Noel, the an - gel did say, was to
cer - tain poor shep - herds in fields as they lay. In
fields where they lay keep - ing their sheep, on a

mp

3 1 3 over

5 1 2 1 over 3

9 under 3 1

Teacher Duet (Student plays one octave higher.)

Moderately

RH
LH

p

with pedal

5 5 5 5 5

3 2 1 5 5

9 3 2 1

Mozart's Symphony No. 40

Wolfgang Amadeus Mozart
 Arranged by Carol Matz

Quickly

Teacher Duet (Student plays one octave higher.)

Moderately fast

Home on the Range

Traditional
Arranged by Carol Matz

Flowing

mf

Oh, give me a home where the buf-fa-lo roam, where the

deer and the an-te-lope play, where sel-dom is heard a dis-

cour-ag-ing word, and the skies are not cloud-y all day.

Detailed description: This block contains the piano accompaniment for the first system of 'Home on the Range'. It is written in 3/4 time and marked 'Flowing' and 'mf'. The melody is in the treble clef, and the bass line is in the bass clef. The lyrics are: 'Oh, give me a home where the buf-fa-lo roam, where the deer and the an-te-lope play, where sel-dom is heard a dis-cour-ag-ing word, and the skies are not cloud-y all day.' Fingering numbers are provided for various notes: 1, 4, 5, 3, 4, 1, 3, 3, 4, 1.

Teacher Duet (*Student plays one octave higher.*)

Flowing

RH
LH

mp

with pedal

Detailed description: This block shows the 'Teacher Duet' section. The right hand (RH) part is written in the treble clef and the left hand (LH) part is in the bass clef. The tempo is 'Flowing' and the dynamics are 'mp'. The LH part includes the instruction 'with pedal'. The RH part has a box around the number 5. The LH part has a box around the number 11. Fingering numbers are provided for various notes: 5, 4, 1, 5, 3, 1, 5, 3, 1, 4, 2, 1, 3, 1, 3.

Dance of the Sugar-Plum Fairy

Peter Ilyich Tchaikovsky
 Arranged by Carol Matz

Moderately fast
 Play both hands TWO octaves higher

Teacher Duet (*Student plays as written—TWO octaves higher.*)

Moderately fast

Rondo alla Turca

Wolfgang Amadeus Mozart
 Arranged by Carol Matz

Quickly

Teacher Duet (Student plays one octave higher.)

Quickly

Yellow Rose of Texas

Traditional
Arranged by Carol Matz

Moderately

There's a yel - low rose in Tex - as I'm

mf

1 1 2 over 1

3

1 3 3

go - ing home to see, she wants no oth - er

3 1 5

6

3 1 over 2 1 2

fel - low, no - bod - y, on - ly me. Oh, she

1 1 2 5 1

Teacher Duet (*Student plays one octave higher.*)

Moderately

RH LH

mp

3 3 6 3

5 3 1 2 1 5 4 1 3

Hark! The Herald Angels Sing

Words by Charles Wesley
Music by Felix Mendelssohn
Arranged by Carol Matz

Moderately fast

1 *over* 2 1 5 1

mf Hark! The her - ald an - gels sing, "Glo - ry to the new - born King!

1 2 3 1 5

5 *over* 2 1 5

Peace on earth and mer - cy mild, God and sin - ners rec - on - ciled."

1 2 1 2 1

Teacher Duet (Student plays one octave higher.)

Moderately fast

RH 1 5 2 1 3 5

LH *mp* 5 2 5 4 2

5 9 4 2 5

Beethoven's Fifth Symphony

Ludwig van Beethoven
Arranged by Carol Matz

Quickly

(Rest!) *f*

mp

(jump)

mf

5

4

1 5

2

5

3

1

3

5 2

5

3

5

9

4

2

2

5

2

3

4

13

5

3