



THE BIG
DIGITAL
Early Elementary
BOOK

40 On-Staff Arrangements!

CLASSICS · FAVORITES · CHRISTMAS

WITH TEACHER DUETS!

carolmatzpiano.com

**Same Contents
as Pre-Reading
but ON STAFF!**

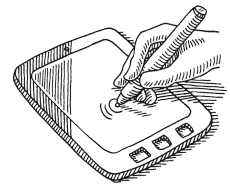
THE BIG DIGITAL *Early Elementary* BOOK ARRANGED BY CAROL MATZ

LICENSE TERMS

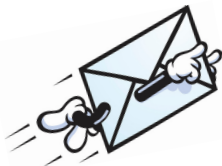
The pieces in this PDF are licensed for use by **one piano studio only**. Teachers may print unlimited copies, but only for use with their own students. This PDF may not be resold or distributed, except as described above.

For inquiries, contact us at: info@carolmatzpiano.com

In addition to printing, this PDF may be loaded to a tablet (such as an iPad®) for use with apps that allow you to write on the music with a stylus or finger. For more information on this, refer to "**Using PDFs on Tablets**" in the FAQ section at carolmatzpiano.com



[Click here](#) for tips on sharing the materials with your students!



BDB07

© Copyright 2024 by Carol Matz

All Rights Reserved No Reproduction Allowed Without Permission

CONTENTS (ALPHABETICAL)

Alouette.....	6	Mary Had a Little Lamb.....	46
Are You Sleeping?.....	8	Morning Mood.....	47
Aura Lee.....	10	Muffin Man, The.....	48
Barber of Seville, The.....	12	Mulberry Bush, The.....	50
Barcarolle.....	14	Ode to Joy.....	52
Bear Went Over the Mountain, The.....	16	On Wings of Song.....	54
Bingo.....	18	Row, Row, Row Your Boat.....	56
Camptown Races.....	20	Shoo, Fly!.....	58
Good King Wenceslas.....	22	Snow Lay on the Ground, The.....	60
Hickory, Dickory, Dock.....	24	Swan Lake.....	62
Humpty Dumpty.....	26	Sweetly Sings the Donkey.....	64
Hush, Little Baby.....	28	Theme from 1812 Overture.....	66
I Saw Three Ships.....	30	This Old Man.....	68
It Came Upon the Midnight Clear.....	32	Trumpet Concerto.....	70
Jingle Bells.....	34	Twinkle, Twinkle, Little Star.....	72
John Jacob Jingleheimer Schmidt.....	36	Up on the Housetop.....	74
Jolly Old Saint Nicholas.....	38	We Three Kings.....	76
Little Reapers Song, The.....	40	Wheels on the Bus, The.....	78
London Bridge.....	42	When the Saints Go Marching In.....	80
Man on the Flying Trapeze, The.....	44	Yankee Doodle.....	82

CONTENTS (BY CATEGORY)

FAVORITES

Alouette.....	6	Mary Had a Little Lamb.....	46
Are You Sleeping?.....	8	Muffin Man, The.....	48
Aura Lee.....	10	Mulberry Bush, The.....	50
Bear Went Over the Mountain, The.....	16	Row, Row, Row Your Boat.....	56
Bingo.....	18	Shoo, Fly!.....	58
Camptown Races.....	20	Sweetly Sings the Donkey.....	64
Hickory, Dickory, Dock.....	24	This Old Man.....	68
Humpty Dumpty.....	26	Twinkle, Twinkle, Little Star.....	72
Hush, Little Baby.....	28	Wheels on the Bus, The.....	78
John Jacob Jingleheimer Schmidt.....	36	When the Saints Go Marching In.....	80
London Bridge.....	42	Yankee Doodle.....	82
Man on the Flying Trapeze, The.....	44		

CHRISTMAS

Good King Wenceslas.....	22
I Saw Three Ships.....	30
It Came Upon the Midnight Clear.....	32
Jingle Bells.....	34
Jolly Old Saint Nicholas.....	38
Snow Lay on the Ground, The.....	60
Up on the Housetop.....	74
We Three Kings.....	76

CLASSICS

Barber of Seville, The.....	12
Barcarolle.....	14
Little Reapers Song, The.....	40
Morning Mood.....	47
Ode to Joy.....	52
On Wings of Song.....	54
Swan Lake.....	62
Theme from 1812 Overture.....	66
Trumpet Concerto.....	70

The Mulberry Bush

Traditional
 Arranged by Carol Matz

Moderately

1 3 5 3

Here we go 'round the mul - ber - ry bush, the

mf

Detailed description: This system of musical notation is for the first four measures of the piece. It is written in 3/4 time. The treble clef staff contains the melody with notes G4, A4, B4, G4, A4, B4, G4, and F4. Fingerings 1, 3, 5, and 3 are indicated above the notes. The lyrics 'Here we go 'round the mul - ber - ry bush, the' are written below the notes. The bass clef staff contains whole rests for all four measures. A dynamic marking of *mf* is placed below the first measure.

2

mul - ber - ry bush, the mul - ber - ry bush.

Detailed description: This system of musical notation covers measures 5 through 8. The treble clef staff contains the melody with notes G4, A4, B4, G4, A4, B4, G4, and F4. Fingerings 2, 2, 2, 2, 2, 2, 2, and 2 are indicated above the notes. The lyrics 'mul - ber - ry bush, the mul - ber - ry bush.' are written below the notes. The bass clef staff contains whole rests for measures 5 and 6, and notes G3, A3, B3, and G3 for measures 7 and 8. A dynamic marking of *mf* is placed below the first measure.

2

Teacher Duet (Student plays one octave higher.)

RH LH

mp with pedal

Detailed description: This section is a duet for the right hand (RH) and left hand (LH). It is written in 3/4 time. The RH part consists of two measures of a melody with notes G4, A4, B4, G4, A4, B4, G4, and F4. Fingerings 5, 1, 1, 1, 1, 1, 1, and 4 are indicated above the notes. The LH part consists of two measures of accompaniment with notes G3, A3, B3, and G3. Fingerings 1, 1, 2, and 4 are indicated below the notes. A dynamic marking of *mp* and the instruction 'with pedal' are placed below the first measure.

Row, Row, Row Your Boat

Traditional
 Arranged by Carol Matz

Moderately

Row, row, row your boat

gently down the stream.

Teacher Duet (Student plays one octave higher.)

RH LH

mp with pedal

The Wheels on the Bus

Traditional
 Arranged by Carol Matz

Moderately

1 3 5

mf The wheels on the bus go 'round and 'round,
 The horn on the bus goes beep, beep, beep,

4

Detailed description: This system of musical notation is for the first five measures of the song. It is written in 4/4 time. The first measure contains the lyrics 'The' in the treble clef and '4' in the bass clef. The second measure contains 'wheels on the' in the treble clef and a whole note in the bass clef. The third measure contains 'bus go' in the treble clef and a whole note in the bass clef. The fourth measure contains ''round and' in the treble clef and a whole note in the bass clef. The fifth measure contains ''round, beep,' in the treble clef and a whole note in the bass clef. Fingerings 1, 3, and 5 are indicated above the treble clef staff for the notes in measures 2, 3, and 4 respectively.

2 5

'round and 'round, 'round and 'round. The
 beep, beep, beep, beep, beep, beep, beep. The

2 4 4

Detailed description: This system of musical notation is for the next five measures. The first measure contains ''round and' in the treble clef and a whole note in the bass clef. The second measure contains 'beep, beep,' in the treble clef and a whole note in the bass clef. The third measure contains ''round, beep,' in the treble clef and a whole note in the bass clef. The fourth measure contains ''round and' in the treble clef and a whole note in the bass clef. The fifth measure contains ''round. beep. The' in the treble clef and a whole note in the bass clef. Fingerings 2 and 5 are indicated above the treble clef staff for the notes in measures 1 and 3 respectively.

Teacher Duet (Student plays one octave higher.)

RH
 LH

mp

Detailed description: This system shows a duet for the right hand (RH) and left hand (LH) in 4/4 time. The left hand plays a simple bass line with quarter notes. The right hand plays chords with specific fingerings: 5-3-1, 5-4-1, 4-1, 4-3-2, 4-1, 5-2, 4-1, 5-2, 4-1. The dynamic marking is *mp* (mezzo-piano).

When the Saints Go Marching In

Traditional
 Arranged by Carol Matz

Moderately fast

Teacher Duet (*Student plays one octave higher.*)

The Barber of Seville

Gioachino Rossini
Arranged by Carol Matz

Quickly

3

p

2

The image shows a piano score for 'The Barber of Seville' in 4/4 time. The first system consists of two staves: a treble clef staff and a bass clef staff. The treble staff begins with a treble clef, a 4/4 time signature, and a key signature of one flat (B-flat). It contains a triplet of eighth notes in the first measure, followed by eighth notes in the second and third measures, and a quarter note in the fourth measure. The bass staff has whole rests in the first three measures and a quarter note in the fourth measure. The second system also has two staves. The treble staff continues with eighth notes in the first two measures, a quarter note in the third measure, and a quarter rest in the fourth measure. The bass staff has whole rests in the first three measures and a quarter note in the fourth measure. A '3' is written above the first measure of the first system, and a '*p*' is written below the first measure. A '2' is written below the fourth measure of the second system.

Teacher Duet (*Student plays one octave higher.*)

RH

LH

pp

5
3
1

The image shows a Teacher Duet piano score in 4/4 time. The top staff is labeled 'RH' (Right Hand) and the bottom staff is labeled 'LH' (Left Hand). The key signature is one flat (B-flat). The RH part consists of a series of chords, each starting with a triplet of eighth notes (fingerings 5, 3, 1) followed by a quarter note. The LH part consists of a series of chords, each starting with a triplet of eighth notes followed by a quarter note. The dynamic marking '*pp*' is written below the first measure. The first system has four measures, and the second system has four measures.

Barcarolle

Jacques Offenbach
 Arranged by Carol Matz

Moderately

Teacher Duet (*Student plays one octave higher.*)

Swan Lake (Theme)

Peter Ilyich Tchaikovsky
Arranged by Carol Matz

Moderately slow

Teacher Duet (*Student plays one octave higher.*)

Up on the Housetop

Benjamin R. Hanby
Arranged by Carol Matz

Quickly

Musical score for 'Up on the Housetop' in 4/4 time, marked 'Quickly' and 'mf'. The score is written for piano and includes lyrics. The first system covers the first four measures: 'Up on the house - top, rein - deer pause,'. The second system covers the next four measures: 'out jumps good old San - ta Claus!'. Fingerings are indicated by numbers 2, 3, and 4 above notes, and 2 below notes. A dynamic marking of *mf* is present at the beginning.

Teacher Duet (*Student plays one octave higher.*)

Teacher Duet musical score in 4/4 time, marked *p*. The score is written for piano and includes fingerings. The first system shows the right hand (RH) and left hand (LH) parts. The second system shows the continuation of the piece, with a box containing the number 5 indicating the start of a new section. Fingerings are indicated by numbers 1, 2, 3, 4, and 5 above and below notes. A dynamic marking of *p* is present at the beginning.

We Three Kings

John Henry Hopkins, Jr.
Arranged by Carol Matz

Moderately

3
We three kings of O - ri - ent are.
mp
1 3

3
Bear - ing gifts, we trav - erse a - far.
1

Teacher Duet (*Student plays one octave higher.*)

RH
LH
p
with pedal
5 3 1
5
2 1
5
5 1 2