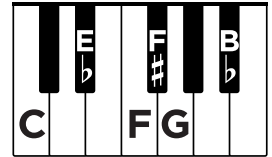


Improvisation

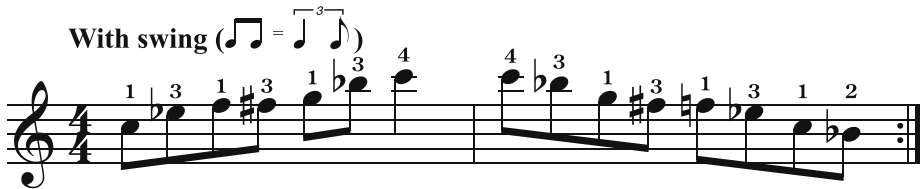


This improvisation uses **SWING RHYTHM** and the **C MINOR BLUES** scale, sometimes simply called the *C blues scale*.

When played in a row, the notes are: **C Eb F F# G Bb**

Warm-Up

Play three times. Be sure to play the 8th notes with an uneven long-short pattern.



Practice these licks until you can play them from memory. Be sure to play with swing rhythm.



How to Use the Licks

Think of these licks as starting points for your improvisation. Play different combinations of the licks you learned. For example:

- ✓ play each lick twice in order = **1 1 2 2 3 3 etc.**
- ✓ experiment by mixing up the order = **3 1 2 3 4 3 etc.**

(Go on to next page!)

(Student part, continued)

carol matz's
inter@active
piano method®

LEVEL **4**

Pro Piano Skills
Unit 8
Page 2 of 2 (right page)

Purchased from **carolmatzpiano.com**
Photocopying and any form of distribution are illegal.

Next, make changes to the licks and/or add your own ideas. For example:

Lick 1 - same notes, different rhythm



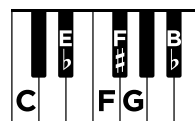
Lick 3 - same rhythm, different notes



Use the licks you learned and feel free to add some of your own ideas! As your teacher starts playing the accompaniment, *feel the beat of the music*. Start playing whenever you're ready!

Minor Blues Improv

Teacher Duet



(Student notes)

Teacher Duet (Student plays *higher than the teacher*)

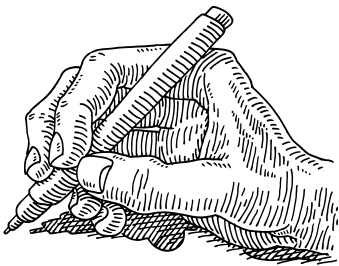
Moderately slow, with swing (♩ = ♪³)

Cm7 **Fm7** **Cm7**

mp

5 **Fm7** **Cm7**

9 **A^b7** **G⁺7** **Cm7** **G⁺** **D^b7[#]11** *repeat ad lib.*

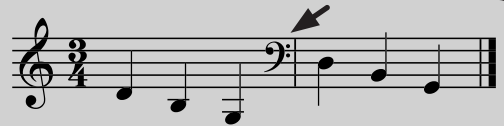


Notation

Clef Changes



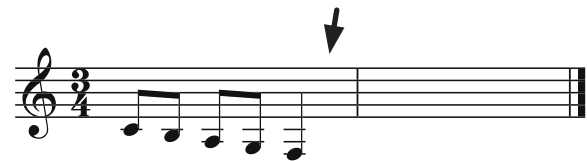
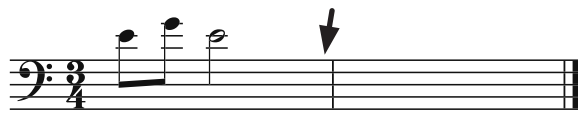
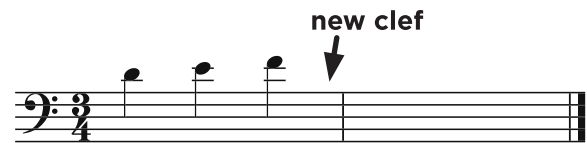
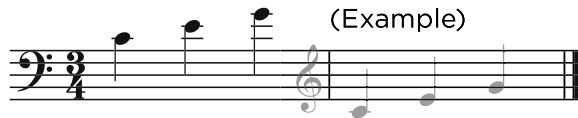
When the **RH** plays low notes, change to bass clef. Put the new clef *before* the bar line.



When the **LH** plays high notes, change to treble clef. Put the new clef *before* the bar line.



1. In each blank measure, write the notes from the measure before using a *different clef*. Place the new clef *before* the bar line.



If the clef changes:

- ✓ in the middle of a measure, place the clef right before the note.
- ✓ after a rest, place the clef right before the *first* note.



2. Put an **X** through the examples that have clef changes in the wrong place.

