

**Warm-Up:**

Practice hands together.

This pattern uses the Basic LH Accompaniment Pattern.



**Inversions**

C<sup>2</sup> = G C E  
 F<sup>1</sup> = A C F  
**Am<sup>1</sup> = C E A**  
 G<sup>1</sup> = B D G

- ✓ Play all the chords in the chord chart hands together.
- ✓ Then, for each chord in the chord chart below, use the following rhythm and the **Basic LH Accompaniment Pattern**.

- ✓ Use this rhythm pattern in the chord chart below. Change the chords and LH notes at each new chord symbol.
- ✓ Add pedal. Change the pedal on each new chord.

# Swing Low, Sweet Chariot

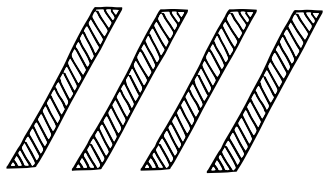
Traditional

**Singer/Teacher:** **4/4** C<sup>2</sup> F<sup>1</sup> C<sup>2</sup> Am<sup>1</sup> G<sup>1</sup>  
 Swing low, sweet char - i ot, com-in' for to car-ry me home. Swing

**5** C<sup>2</sup> F<sup>1</sup> C<sup>2</sup> Am<sup>1</sup> G<sup>1</sup> F<sup>1</sup> C<sup>2</sup>  
 low, sweet char - i - ot, com-in' for to car-ry me home. I

**9** F<sup>1</sup> C<sup>2</sup> Am<sup>1</sup> G<sup>1</sup>  
 looked o-ver Jor-dan and what did I see com-in' for to car-ry me home? A

**13** C<sup>2</sup> F<sup>1</sup> C<sup>2</sup> Am<sup>1</sup> G<sup>1</sup> F<sup>1</sup> C<sup>2</sup>  
 band of an - gels com-in' af-ter me, com-in' for to car-ry me home.



# Swing Low, Sweet Chariot

## Optional Teacher Part (Melody)

**Moderately slow**  
*8va throughout*

Swing low, sweet char - i-ot, com-in' for to car-ry me home. Swing

↑ **Student starts here**

**5**

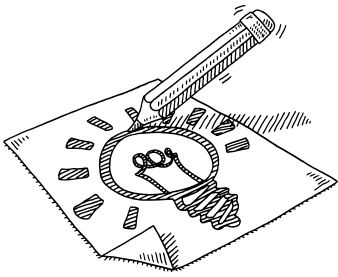
low, sweet char - i-ot, com-in' for to car - ry me home. I

**9**

looked o-ver Jor-dan, and what did I see com-in' for to car-ry me home? A

**13**

band of an-gels com-in' af-ter me, com-in' for to car-ry me home.



## Composition

# Compose with LH Accompaniment Patterns

- ✓ First, write in all of the LH notes. Follow the letter names given below the bass staff, as well as the type of LH accompaniment pattern:

**Basic 1**

**Basic 2**

**Crossover**

- ✓ Complete the melody by choosing notes from the **C major scale** that sound good with the LH part. The small notes above each measure tell you the rhythm to use.
- ✓ Add *slurs* and *dynamics*.
- ✓ Play your piece, and add a title.

\_\_\_\_\_ (Song title.)

By \_\_\_\_\_


**Moderately slow**

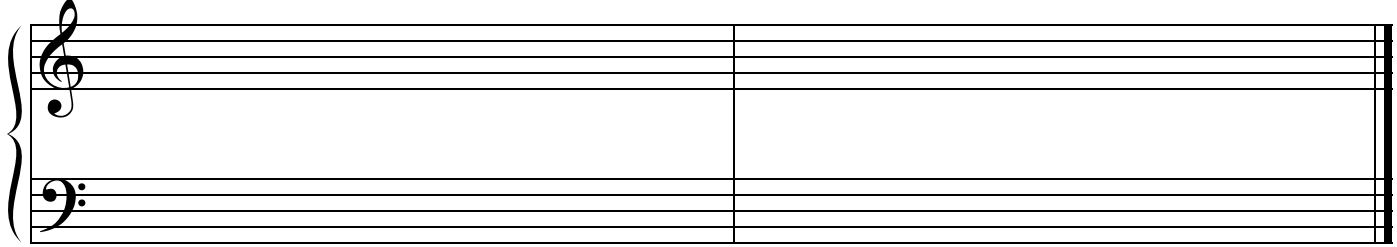
(Example)

**Basic 1** →

**Basic 2** →

**Basic 1** →

7  *Fine*




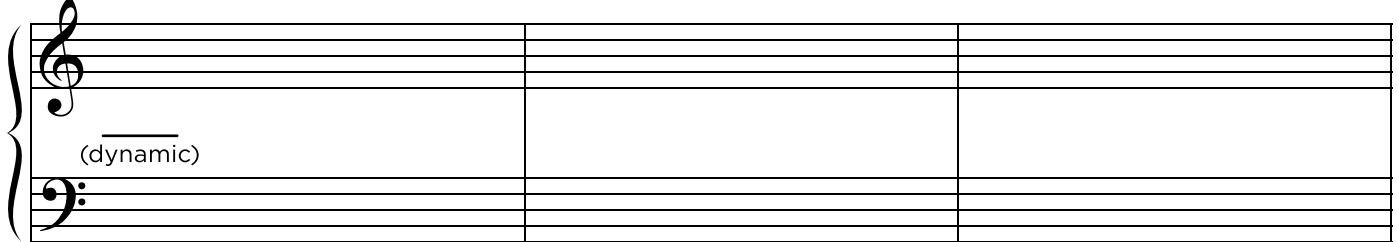
Am

G

Am

Crossover

9    
 (dynamic)



C

G


F

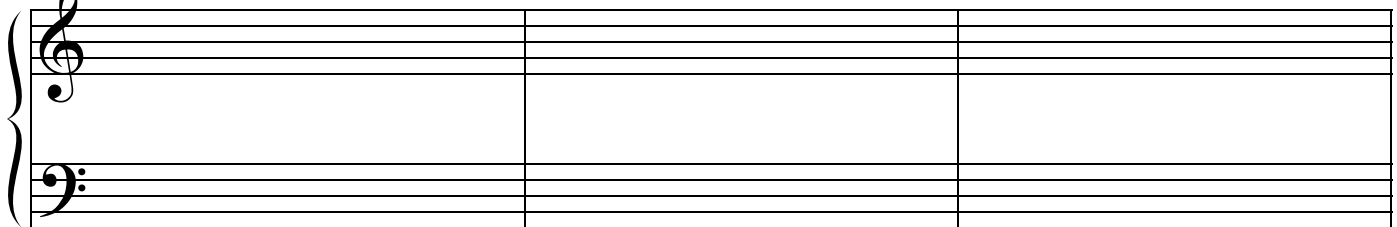
G

Dm

Em

Basic 1 →

12    
 (dynamic)



F

G

C


G

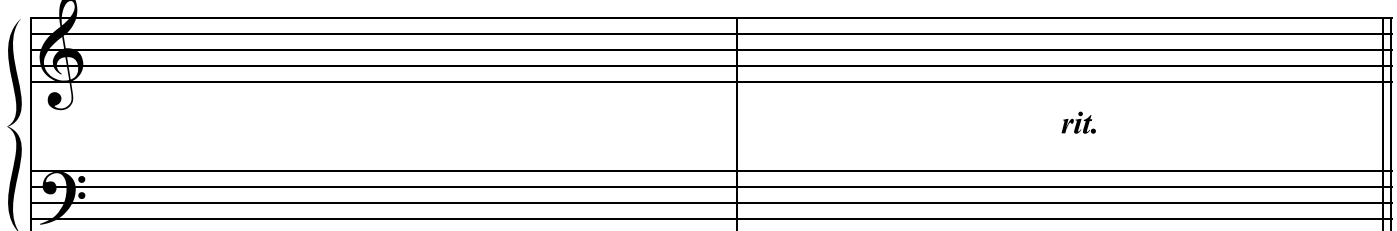
F

G

Basic 2 →

Basic 1 →

15  *D.C. al Fine*



Dm

Em

F

G

Basic 2 →

*rit.*