


Review

Chord Inversions

An **INVERSION** is a chord that has its notes arranged in a different order.

 To play a **1ST INVERSION** chord, *move the bottom note to the top*:


G Chord
RH Fingers: 1 3 5
Notes: G B D

G Chord in 1st Inversion
RH Fingers: 1 2 5
Notes: B D G

In the chord charts, *1st inversion* is shown with a small 1. **G¹ = B D G**
(Example)

Play these 1st inversion chords one after another with your RH.
The shape and feel of these chords are similar.

C¹ = E G C **D¹ = F# A D** **E¹ = G# B E** **F¹ = A C F** **G¹ = B D G**

 To play a **2nd INVERSION** chord, *move the top note to the bottom*:

F Chord
RH Fingers: 1 3 5
Notes: F A C

F Chord in 2nd Inversion
RH Fingers: 1 3 5
Notes: C F A

2nd inversion is shown with a small 2. **F² = C F A**
(Example)

Play these 2nd inversion chords one after another with your RH.
The shape and feel of these chords are similar.

C² = G C E **D² = A D F#** **E² = B E G#** **F² = C F A**

Review

Slash Chords

SLASH CHORDS have a note in the LH that is different from the chord name.

(Example)

LH C LH E

Think of this slash chord as "C over E":

RH CHORD
on top

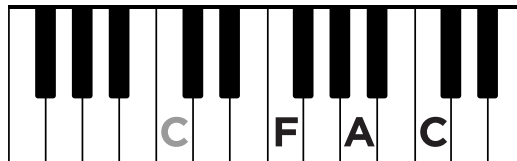
C/E = C

E

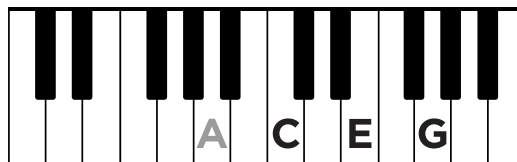
LH NOTE
on bottom

Draw a line from each slash chord symbol to the matching keyboard. Then, play each slash chord hands together.

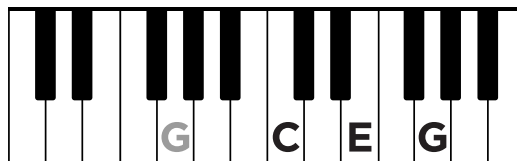
(Example) **C/G**



C/E



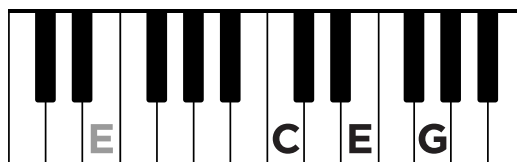
G/B



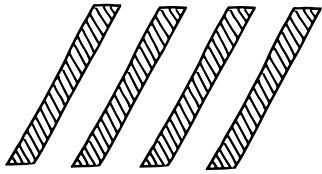
F/C



C/A



Chord Charts



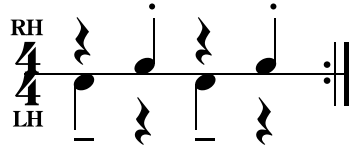
carol matz's
interactive
piano method®

LEVEL **4**

Pro Piano Skills
Unit 2
Page 1 of 2 (left page)

Purchased from carolmatzpiano.com
Photocopying and any form of distribution are illegal.

- ✓ Play all the chords in the chord chart hands together.
- ✓ Tap this rhythm with both hands, and repeat it several times without stopping.
- ✓ Play that rhythm pattern with a RH **D minor triad** and a LH single-note **D** or **D** octave (optional).
- ✓ Use this rhythm pattern in the chord chart below. Change the chords and LH notes at each new chord symbol.



NEW

Inversions

Dm² = A D F
F¹ = A C F
C² = G C E

The Erie Canal

Traditional

Moderately

4/4 **Dm^{2*}** **Dm²/C** **G/B** **Gm/B_b** **Dm²/A** **A** **Dm²**

Singer/Teacher: I've got a mule, her name is Sal; fif - teen miles on the E-rie Ca - nal. She's a

5 **Dm²/C** **G/B** **Gm/B_b** **Dm²/A** **A** **Dm²**

good hard work-er and a good old pal; fif - teen miles on the E-rie Ca - nal. We've

9 **F¹** **C²** **Dm²** **A**

hailed some barg-es in our day, filled with lum - ber coal and hay. From

13 **Dm²** **Dm²/C** **G/B** **Gm/B_b** **Dm²/A** **A** **Dm²**

Buf - fa - lo we start our trip; it's a slow but a ver-y good ship!

* **Teachers:** The student should play a LH note that matches the root of the chord.

The Erie Canal

Optional Teacher Part (Melody)

Moderately, with swing (♩ = ♪³)

I've got a mule, her name is Sal; fif-teen miles on the E-rie Ca-nal. She's a

↑ Student starts here

5

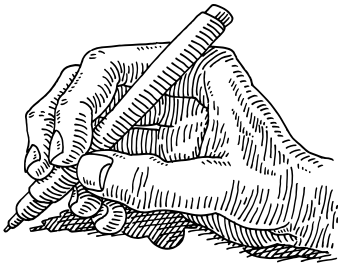
good hard work-er and a good old pal; fif-teen miles on the E-rie Ca-nal. We've

9

hauled some barg-es in our day, filled with lum-ber, coal and hay. From

13

Buf-fa-lo we start our trip; it's a slow but a ver-y good ship!



Notation

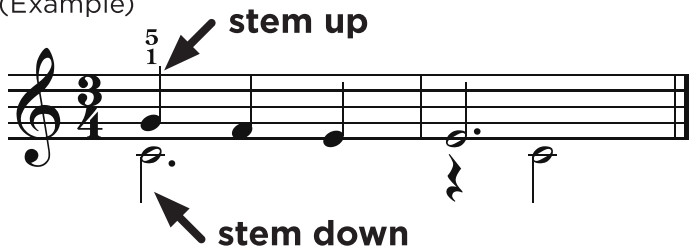
Writing Two Voices in One Hand



Sometimes two **VOICES** (separate parts) are played at the same time in one hand. When writing two voices in one hand on the same staff:

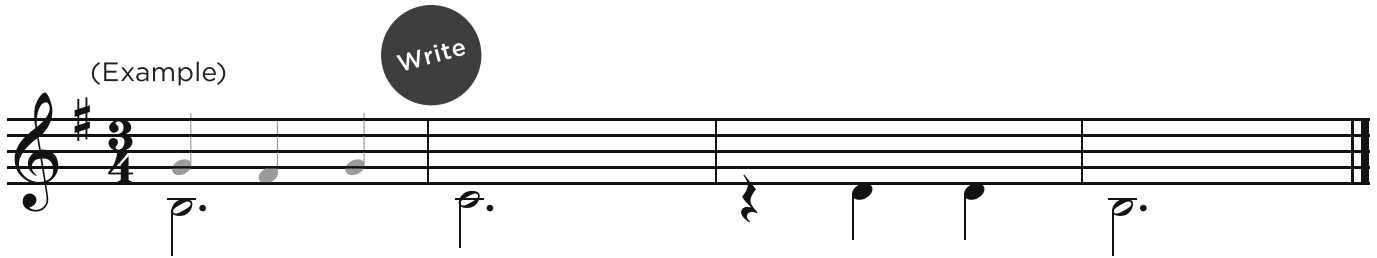
- ✓ the **UPPER VOICE** notes have stems going up
- ✓ the **LOWER VOICE** notes have stems going down

(Example)



Each voice has a full set of beats in each measure.

1. Add **upper voice** notes to the music below. You may choose any notes and rhythms you like, as long as you can play both voices with only your RH.



2. Add **lower voice** notes to the music below. You may choose any notes and rhythms you like, as long as you can play both voices with only your LH.

