

# Compose an Étude

## Composition

An **ÉTUDE** (AY-tood) is a piece written to help students develop a certain technique. The étude below requires the technique of playing even LH staccato broken chords.

- ✓ First, write in all of the LH notes. Use the same rhythm pattern as measure 1, and follow the Roman numerals given.
- ✓ Complete the RH melody by choosing notes from the **G minor scale**. The small notes above each measure tell you the rhythm to use.
- ✓ Add *slurs* and *staccatos*, and then play your étude.

## Étude in G Minor

By \_\_\_\_\_

**Allegretto**

*mp*

5 3

i iv V7

4

i iv V7

1. 2.

7

iv V7 1



- ✓ Practice the RH melody.
- ✓ Play the lead sheet hands together, using this **LH RHYTHM PATTERN**:



### Bass Walk-Down Patterns

**C**

**F**

- ✓ Play through the lead sheet with the LH only, using a **Bass Walk-Down Pattern** for each chord that has an asterisk (\*).
- ✓ Finally, play hands together using the Bass Walk-Down Patterns where indicated.

## Alexander's Ragtime Band

Irving Berlin (1888-1989)

Moderately, with swing (♩ =  $\overset{\frown}{\text{♩}} \overset{\frown}{\text{♩}}$ )

**C\*** **G**

Come on and hear, come on and hear Al-ex - an-der's rag-time

**4** **C** **F\*** **F\***

band. Come on and hear, come on and hear, it's the best band in the

**8** **C\***

land. They can play a bug - le call like you nev - er heard be - fore.

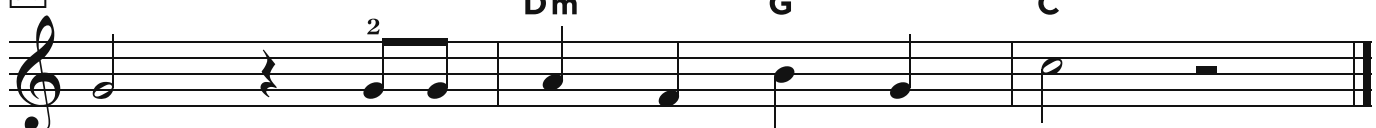
**11** **C\*** **D**  
 3 1  
  
 So nat-ur-al that you want to go to war. That's just the best-est band what

**15** **G** **C\***  
 3  
  
 am, oh, my hon-ey lamb. Come on a - long, come on a - long, let me

**19** **G** **C** **F\***  
 3 2 1 3  
  
 take you by the hand, up to the man, up to the man who's the

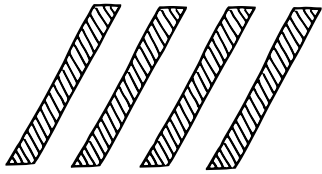
**23** **F\*** **C**  
 2 1 3  
  
 lead - er of the band. If you care to hear the "Swa-nee Riv - er"

**27** **F2** **D** **C\***  
 5 3  
  
 played in rag - time, come on and hear, come on and

**30** **Dm** **G** **C**  
 2  
  
 hear Al - ex - an - der's rag - time band.

LH = 

# Chord Charts



4
LEVEL

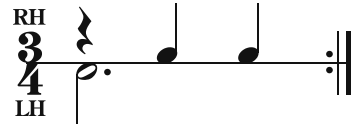
Pro Piano Skills

Unit 10

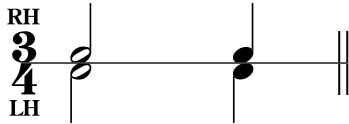
Page 1 of 2 (left page)

Purchased from [carolmatzpiano.com](http://carolmatzpiano.com)  
Photocopying and any form of distribution are illegal.

✓ Tap this rhythm pattern hands together, and repeat it several times without stopping.



✓ Use this rhythm pattern in the chord chart below. Change the chords and LH notes at each new chord symbol. In the measures that have two chords, use the following rhythm:



✓ Add pedal. Change the pedal on each new chord.

Chords and Inversions

NEW

→

$E_b^1 = G B_b E_b$

$A_b = A_b C E_b$

$B_b = B_b D F$

## Musetta's Waltz

Giacomo Puccini (1858-1924)

Moderately

3/4  $E_b^1$  |  $E_b^1/G$  |  $A_b$  |  $A_b/F$  |

$A_b/B_b$  |  $B_b$  |  $E_b^1$  |  $E_b^1/B_b$  |

$E_b^1$  |  $E_b^1/G$  |  $A_b$  |  $A_b/F$  |

$E_b^1/G$  |  $A_b$  |  $E_b^1/B_b$  |  $B_b$  |  $E_b^1$  |

Play hands together and hold for 3 beats.

(Go on to next page!)

### Other Rhythm Patterns

Play the “Musetta’s Waltz” chord chart using each of these rhythm patterns. In the measures that have two chords, use the rhythm in the original pattern.

**E<sub>b</sub><sup>1</sup>**

**E<sub>b</sub><sup>1</sup>**

## Musetta’s Waltz

Optional Teacher Part (Melody)

Moderately  
*8va throughout*

5 1 2 3

5

9

13