



- ✓ Practice the RH melody.
- ✓ Play the **Chord Review** with your LH. Then, play all the chords in the lead sheet.
- ✓ Play the lead sheet hands together. Each time you see a chord symbol, play and hold the chord with your LH while your RH plays the melody.

Chord Review

Am F G Em F Dm E Gm

LH 1 3 5

Pavane

Gabriel Fauré (1845-1924)

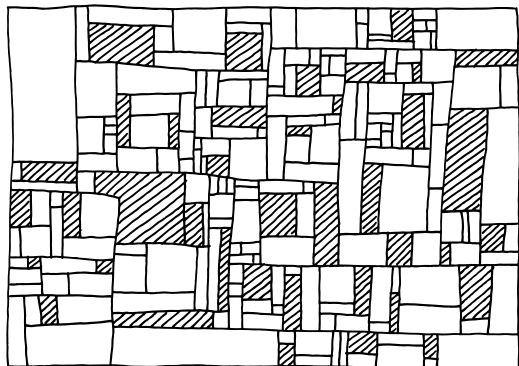
Moderately slow

Am F G Em

5 F Dm E

9 Am Gm

13 F E Am



Pavane

Optional Teacher Part

Teacher Duet (Student plays *as written*.)

Moderately slow
8va throughout

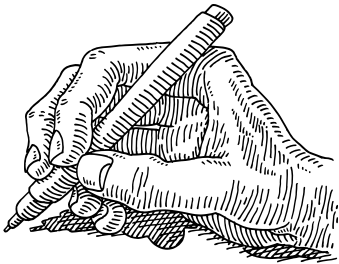
RH only

p

5

9

13




Notation


Notating Articulation


ARTICULATION (ar-TICK-you-LAY-shin) is the term for playing *staccato* or *legato*, and includes *accents*, *staccatos*, *slurs*, and *phrase marks*.


 *Staccatos* and *accents* are placed on the notehead side:



or



PRO TIP  Staccatos never go on notes longer than one beat!




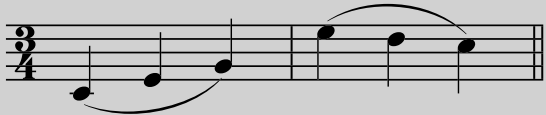
No! No! No!

1. Add staccatos to notes on beats 1 and 3. Then, add accents to notes on beats 2 and 4.



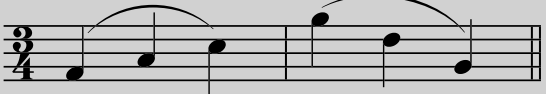
(Example)

 **SLURS** and **PHRASE MARKS** are usually placed on the notehead side:




The ends of the slurs are usually *centered* with noteheads.

If there are *mixed* stem directions, slur and phrase marks are placed *over*.



2. Add one slur per measure.



(Example)

