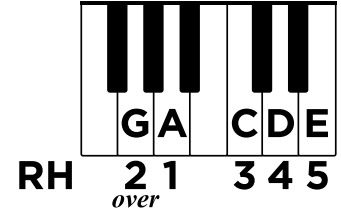


Improvisation

Rock Improv



The scale used most often when improvising rock music is the **PENTATONIC** scale. "Penta" means "five." (A *pentagon* has 5 sides.) A **PENTATONIC SCALE** has 5 tones (or notes).

Warm-Ups

Play three times each.

1.

2.

PRO TIP Repeating rhythm patterns helps listeners hear your musical ideas. In the warm-ups, which measures have the same rhythm patterns?

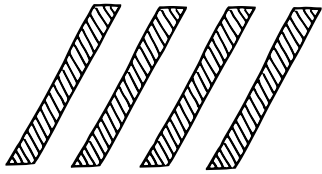
- ✓ Choose one note from the keyboard diagram at the top, and play all the rhythm patterns below. Start counting out loud before playing.

Rhythm Patterns (all in 4/4)

- ✓ Then, choose two notes from the keyboard diagram. Play the rhythm patterns again switching between the two notes. You may switch between these two notes any way you like!
- ✓ Repeat the same steps using all 5 notes from the diagram.

(Go on to next page!)

Chord Charts



carol matz's
inter@active
piano method®

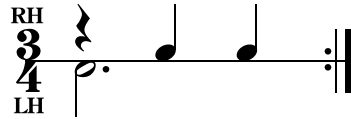
LEVEL 3

Pro Piano Skills
Unit 7

Page 1 of 2 (left page)

Purchased from **carolmatzpiano.com**
Photocopying and any form of distribution are illegal.

✓ Tap this rhythm with both hands, and repeat it several times without stopping.



- ✓ Play that rhythm pattern with a RH C major triad and a LH single-note C.
- ✓ Use this rhythm pattern in each measure of the chord chart below. Change the chords and LH notes at each new chord symbol.
- ✓ Add pedal. Change the pedal on beat 1 of each measure.



Inversions

F² = C F A

D² = A D F#

G¹ = B D G

Home on the Range

Traditional

Moderately

3/4

Singer/Teacher: Oh, give me a home where the buf - a - lo roam, where the deer and the

C **F²** **C**

an - te - lope play, where sel - dom is heard a dis -

Am **D²** **G** **C**

cour - ag - ing word, and the skies are not cloud - y all day.

F² **C** **G¹** **C**

Home, home on the range, where the deer and the

D² **G** **C** **F²**

an - te - lope play, where sel - dom is heard a dis - cour - ag - ing

C **G¹** **C**

word, and the skies are not cloud - y all day.

Play hands together and hold for two beats.

Home on the Range

Optional Teacher Part (Melody)

Moderately
8va throughout

Oh, give me a home where the buf-fa-lo roam, where the deer and the

↑ Student starts here

6

an - te - lope play, where sel - dom is heard a dis -

11

cour-ag - ing word, and the skies are not cloud-y all day.

17

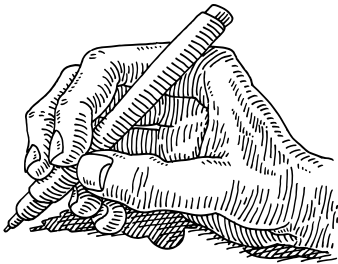
Home, home on the range, where the deer and the

22

an - te - lope play, where sel - dom is heard a dis - cour - ag - ing

28

word, and the skies are not cloud - y all day.



Notation

Stem Direction Beamed 8th Notes

Remember: Stems go **UP** for notes below the middle line:

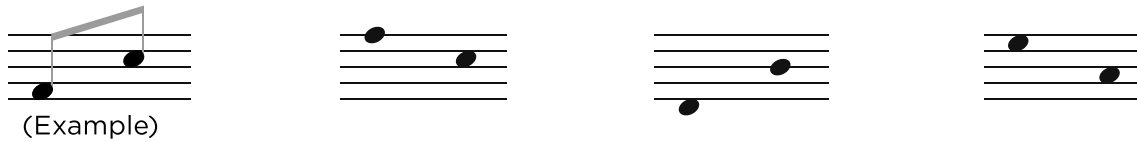


Q If two or more notes are beamed together, the note *farthest from the middle line* decides the stem direction for all the notes.

PRO TIP To count the distance from the middle line, place your pencil tip on the middle line. Then, point and count lines and spaces.

3 steps from middle

1. Add stems and beams to the 8th notes.



Q If beamed notes are the *same distance from the middle line*, the stems go **DOWN**.

2 steps from middle 3 steps from middle 4 steps from middle


2. Add stems and beams to the 8th notes.



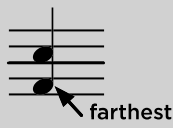
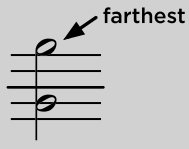
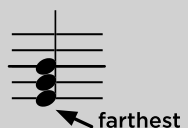

Stem Direction

Intervals and Chords

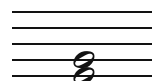
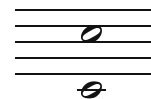
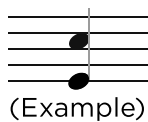
Intervals and chords follow the same stem-direction rules as beamed notes.

 The note *farthest from the middle line* decides the stem direction for all the notes.

If the notes are *the same distance from the middle line*, the stem goes **DOWN**.

1. Add stems to the intervals.



2. Add stems to the chords.

