



All Through the Night

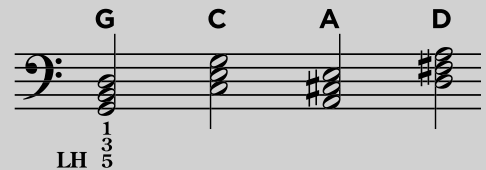
Traditional



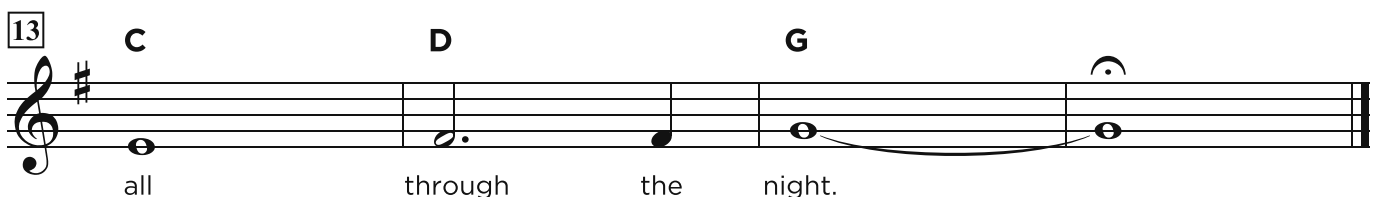
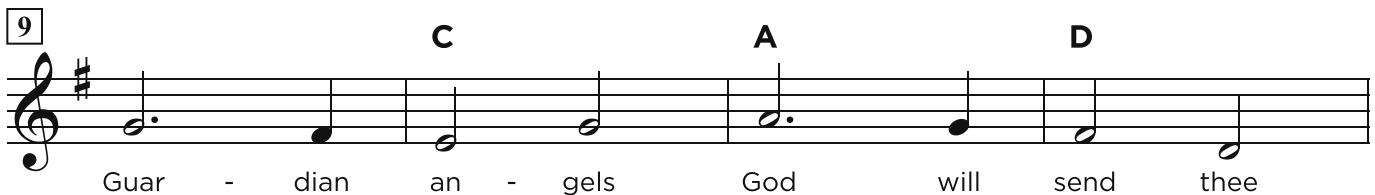
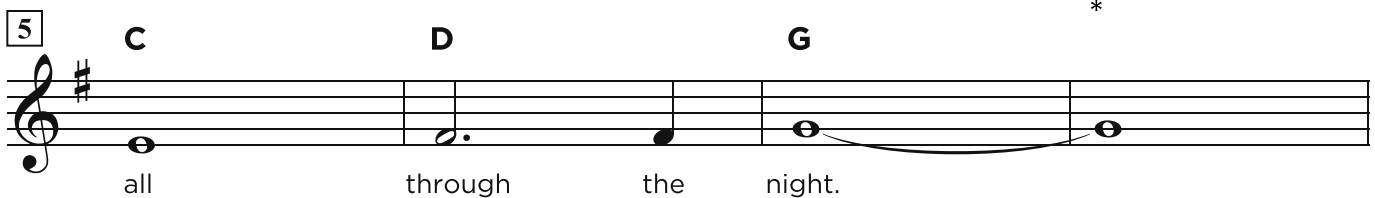
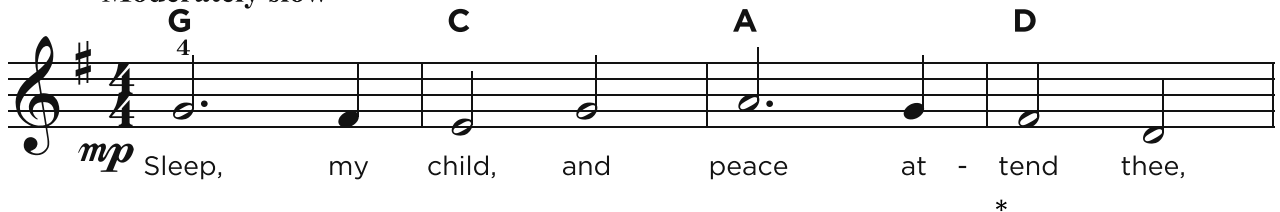
- ✓ Practice the RH melody.
(Notice the key signature.)
- ✓ Play the **Chord Review** with your LH.
Then, play all the chords in the lead sheet.
- ✓ Play the lead sheet hands together.
Each time you see a chord symbol, play and hold the chord with your LH while your RH plays the melody.
- ✓ Finally, play hands together using this **LH broken-chord pattern**:



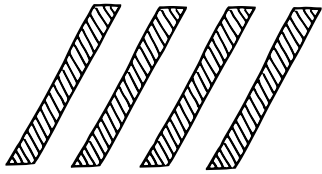
Chord Review



Moderately slow



* If a measure doesn't have a chord symbol, repeat the chord from the measure before.



Slash Chords

SLASH CHORDS have a note in the LH that is different from the chord name.

(Example)

LH C LH E

Think of this slash chord as "C over E":

RH CHORD
on top

C/E = C

←

E

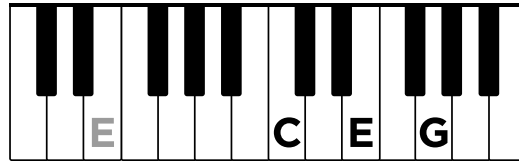
←

LH NOTE
on bottom

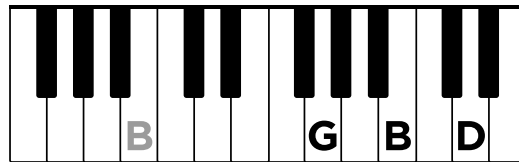
1. Draw a line from each slash chord symbol to the matching keyboard.

(Example)

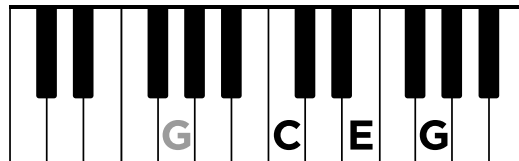
C/G



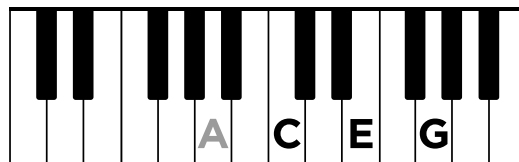
C/E



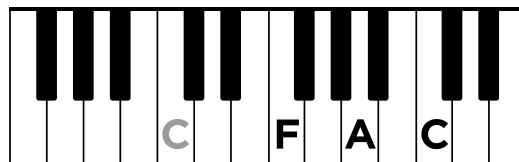
G/B



F/C

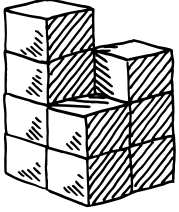


C/A



(Go on to next page!)

Chords



2. Play these slash chords:

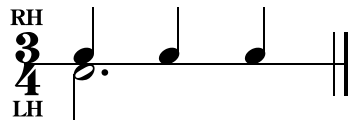
C/E

C/G

C/A

3. For each example below:

- ✓ Play each chord hands together.
- ✓ Then, play using the following rhythm pattern:



3/4 **C** / / / | **C/A** / / / ||

3/4 **G** / / / | **G/B** / / / ||

3/4 **C/D** / / / | **D** / / / | **G** ◊ . ||

Play hands together and hold for three beats.

3/4 **F/A** / / / | **F/G** / / / | **C** ◊ . ||

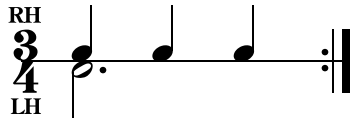


Warm-Up:

Play this RH chord progression:

Inversions

F² = C F A
G¹ = B D G

- ✓ Tap this rhythm with both hands, and repeat it several times without stopping. 
- ✓ Play that rhythm pattern with a RH C major triad and a LH single-note C.
- ✓ Use this rhythm pattern in each measure of the chord chart below. Change the chords and LH notes at each new chord symbol.
- ✓ Add pedal. Change the pedal on beat 1 of each measure.

Amazing Grace

Traditional

Moderately slow

Singer/Teacher: 

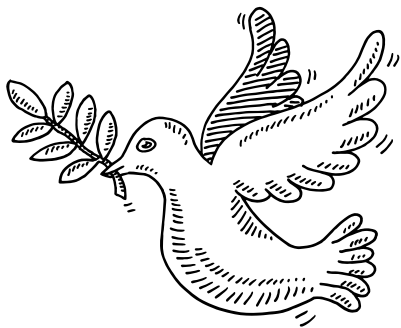
Start LH on Low C (2 octaves below Middle C)

C/A **D** **G¹**
 saved a wretch like me. I

C **C/E** **F²** **C**
 once was lost but now am found, was

C/A **G¹** **F²** **C**
 blind, but now I see.

Play hands together and hold for three beats.



Amazing Grace

Optional Teacher Part (Melody)

Moderately slow
8va throughout

1 3 2

A - maz - ing grace, how sweet the sound that

↑ Student starts here

5 3-1 3

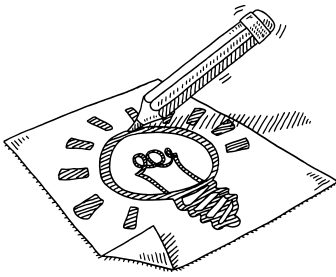
saved a wretch like me. I

9 1 2

once was lost, but now am found, was

13 3

blind, but now I see.

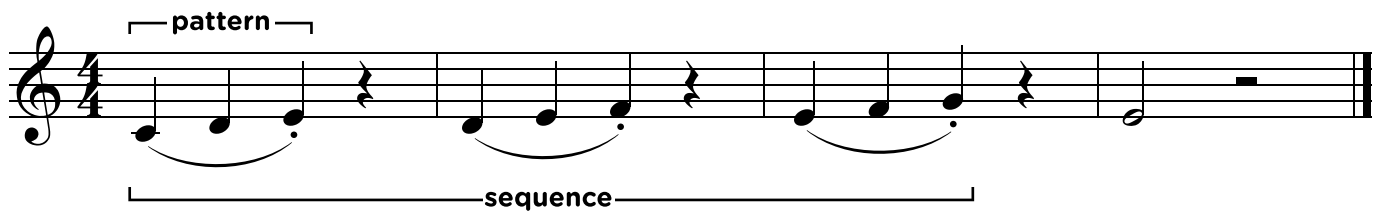


Composition

Composing with Pattern and Sequence

A **PATTERN** is a short musical idea that has a clear rhythm and shape. Patterns are sometimes called **MOTIVES**.

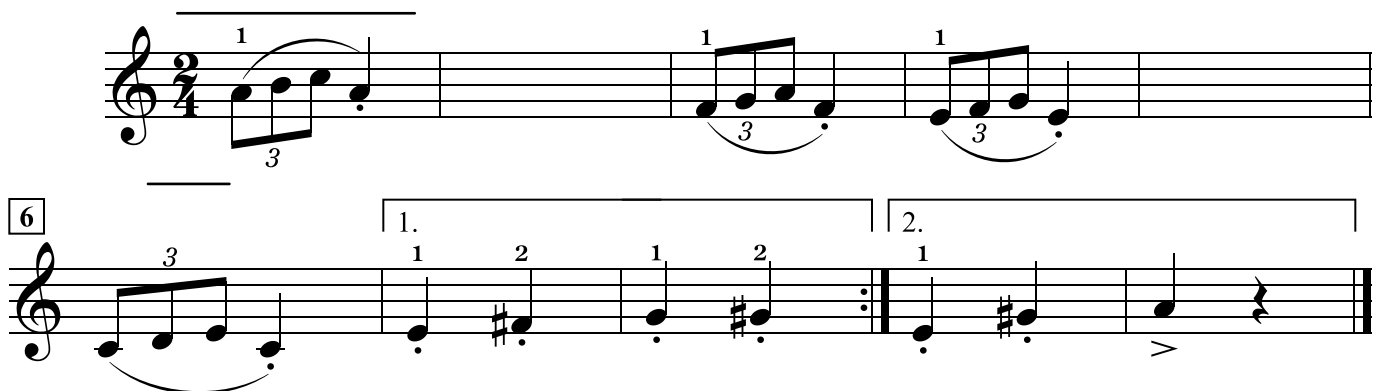
Repeating a pattern starting on different notes creates a **SEQUENCE**.
 Play the **PATTERN** and **SEQUENCE** below:



Notice that this sequence moves up. Sequences can move up or down in a row.

Fill in the Blanks

- ✓ Finish composing the melody below by completing the sequence in measures 1-6. Draw the missing notes that should be in measures 2 and 5.
- ✓ Add a tempo mark and a dynamic in measure 1 (on the blank lines).
- ✓ Then, play the melody.



(Go on to next page!)



Be a Composer!

- ✓ On the blank staff lines at the bottom of the page, draw bar lines to create a total of 8 measures. Put 4 measures on each separate line.
- ✓ Choose one of the following patterns, and copy it in measure 1. Be sure to copy any slurs and staccatos and to space notes evenly.
- ✓ Then, fill in measures 2, 3, and 4 by creating a sequence *moving up*.



- ✓ Choose another pattern, and copy it in measure 5. Then, fill in measures 6 and 7 with a sequence *moving down*.
- ✓ In the last measure, write a middle C, using a dotted half note (♩.).
- ✓ Finally, play the melody.



Remember:
 Sequences can move
 up or down in a row.

