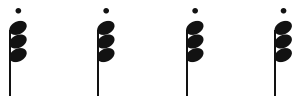




- ✓ Practice the RH melody.
- ✓ Play the **Chord Review** with your LH. Then, play all the chords in the lead sheet.
- ✓ Play the lead sheet hands together. Each time you see a chord symbol, play and hold the chord with your LH while your RH plays the melody.
- ✓ Finally, play hands together using this **LH RHYTHM PATTERN:**

Chord Review



The Stars and Stripes Forever

John Philip Sousa (1854-1932)

Quickly

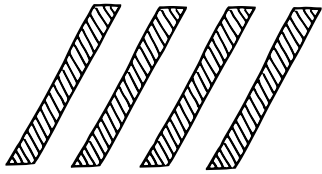
5 **G** **D**

5 **G** **C** **D**

9 **G** **B** **Em**

13 **Cm** **G** **D** **G**

Chord Charts



LEVEL 3

Pro Piano Skills
Unit 10
 Page 1 of 2 (left page)

Purchased from carolmatzpiano.com
 Photocopying and any form of distribution are illegal.

- ✓ Tap this rhythm with both hands, and repeat it several times without stopping.
- ✓ Play that rhythm pattern with a RH A minor triad and a LH single-note A.
- ✓ Use this rhythm pattern in each measure of the chord chart below. Change the chords and LH notes at each new chord symbol.
- ✓ Add pedal. Change the pedal on beat 1 of each measure.

RH $\frac{3}{4}$
 LH

NEW

Inversions

C² = G C E

D² = A D F#

F² = C F A

E¹ = G# B E

House of the Rising Sun

Moderately

$\frac{3}{4}$ **Am**

Singer/Teacher: There is a house in New Orleans, it's

C² **D²** **F²**

called the Ri - sing Sun. It's

Am **C²** **D²** **F²**

been the ruin of man - y poor boys and

Am **E¹** **Am**

God, I know I'm one.

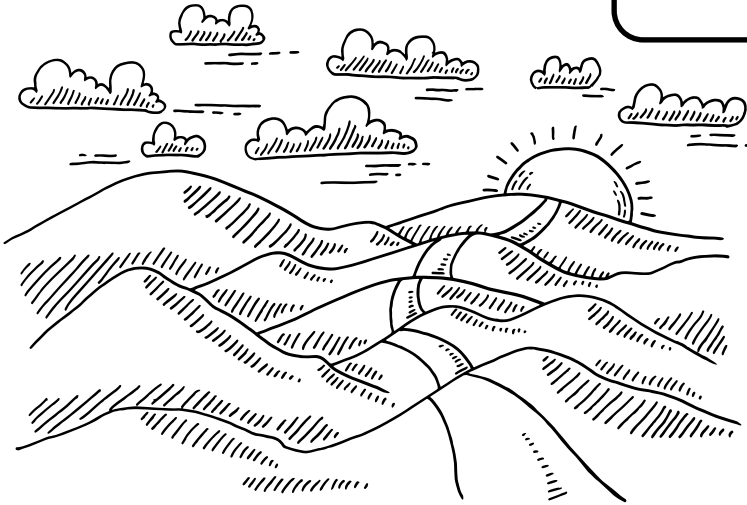
Other Rhythm Patterns

Play the "House of the Rising Sun" chord chart using each of these rhythm patterns.

Am

Am

Am



House of the Rising Sun

Optional Teacher Part (Melody)

Moderately
8va throughout

1

There is a house in New Orleans, it's

↑ Student starts here

5

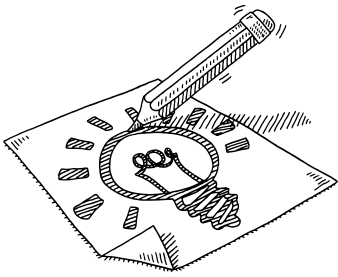
called the Ri - sing Sun. It's

9

been the ruin of man - y poor boys and

13

God, I know I'm one.



Composition

Compose a Sonatina Movement

- ✓ First, write in all of the LH notes. Use the **ALBERTI BASS** pattern, and follow the Roman numerals and chord symbols given.
- ✓ Complete the melody by choosing notes that sound good with the LH part. The small notes above each measure tell you the rhythm to use.
- ✓ Add *slurs*, *staccatos*, *dynamics*, and any other markings you like.
- ✓ Play your sonatina, and add a title.

_____ Sonatina

By _____

Moderato

C Major

(dynamic)

I IV V7

4

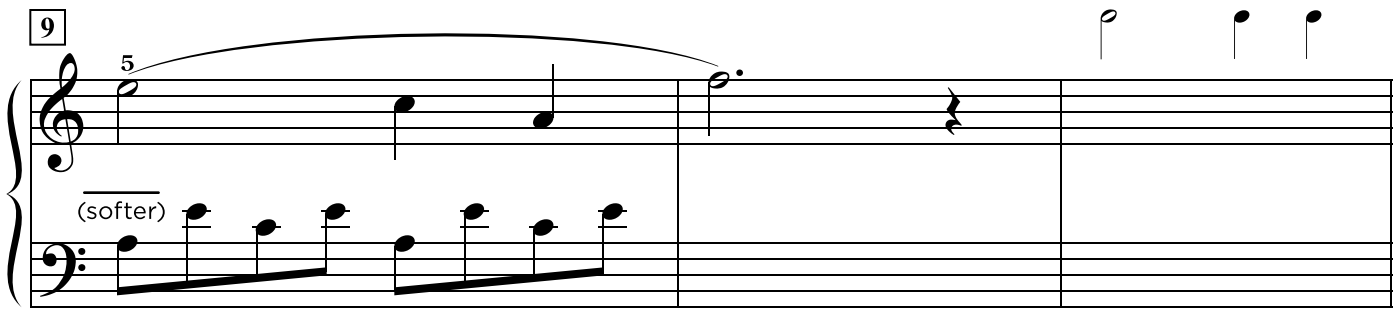
I IV I IV I

7



(dynamic) *f*

9

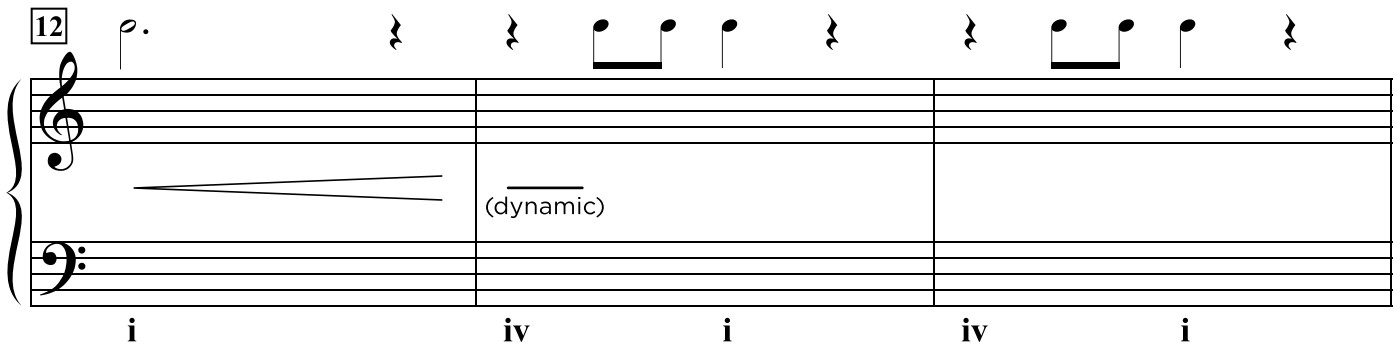


(softer)

A Minor

5 1 3 1 *i* *iv* *V7*

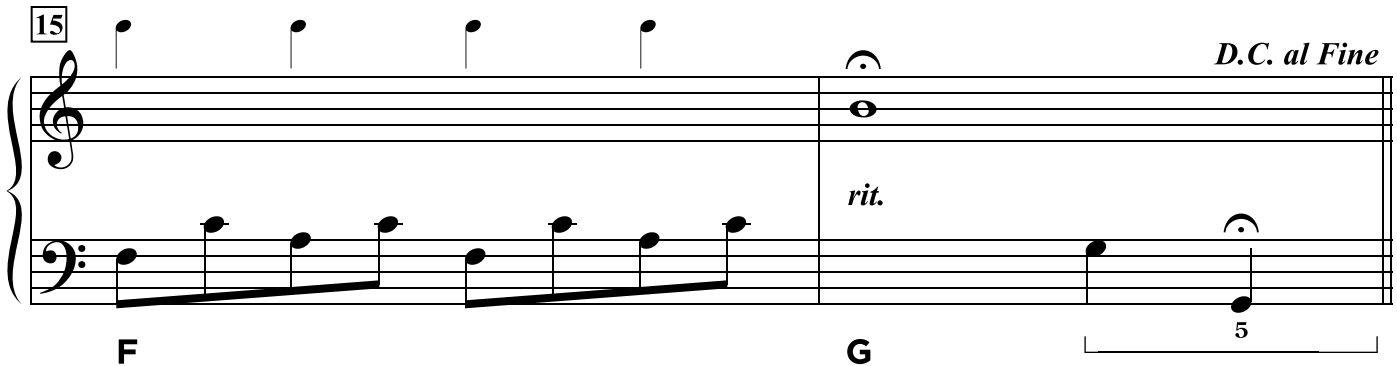
12



(dynamic)

i *iv* *i* *iv* *i*

15



rit. *D.C. al Fine*

F **G** 5